



SUNGLASSES

2020

YCEBÉ
PURE ADRENALINE

HISTORY OF CÉBÉ



1892

Birth of the brand in the Jura mountains.
Cébé is a **pioneer** in the **manufacture** of sport sunglasses.

End of 19th century:
Carl Benz, orders Cébé sunglasses to wear when driving his sport car.



1940

The company extended its activities
to the **manufacture of ski helmets and goggles.**

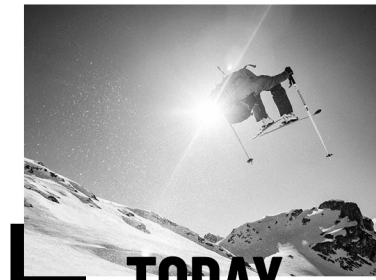
1970

Walter Cecchinel, a famous french mountaineer,
has left an indelible mark in the brand's history
by inspiring a range of **specialized sunglasses for glacier.**



2013

Cébé is the **Gold Winner** of the prestigious
Ispo Award with its revolutionary S'Track style.



TODAY

Cébé invites new generations
to reveal the pioneering part
in each of them in order to push
their limits of their sport practice

CONTENTS

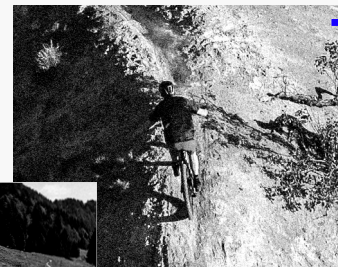
**FRAME
TECHNO**

PAGE 22



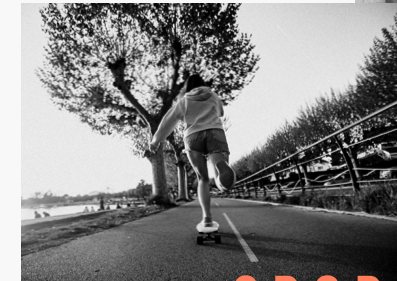
**ALL
TRACK**

PAGE 46



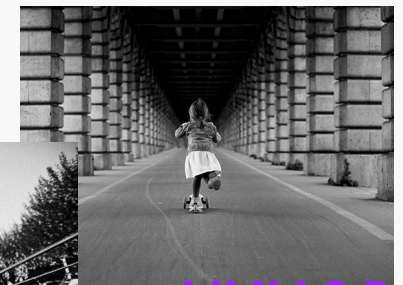
CORE

PAGE 27



**SPORT
LIFESTYLE**

PAGE 63



JUNIOR

PAGE 80



**LENS
TECHNO**

PAGE 5

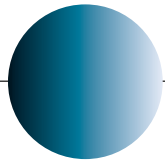
WHAT'S NEW ?

TECHNOLOGY

ZONE VARIO GREY CAT.0-3 BLUE LENS

PAGE 20

A NEW PHOTOCROMIC LENS
THAT CHANGES
FROM CATEGORY 0 TO 3
IN NO TIME AT ALL!



ALL-TRACK

CINETIK 2.0

PAGE 49

SHARPER LINES FOR A MORE
AGGRESSIVE LOOK!



SPORT LIFESTYLE

IRON

PAGE 64

ANGULAR FRAME
AND A METAL BROW BAR FOR
A MORE ASSERTIVE LOOK!



JUNIOR

KATCHOU

PAGE 83

THE BEST CHOICE FOR
LARGE FACED BABIES!



WILD 2.0

PAGE 51

THIN AND LIGHTWEIGHT FRAME
TO FOCUS ONLY
ON PERFORMANCE!



PHENIX

PAGE 66

LOOK COOL WHILE BEING
PERFECTLY PROTECTED!



AYDEN

PAGE 111

FOR CHILDREN WHO WANT
TO LOOK LIKE THEIR PARENTS!



CORE

S'TRACK L
SIZE L

PAGE 28

S'TRACK M
SIZE M

PAGE 30

S'PRING 2.0
SIZE M

PAGE 32

UPSHIFT
SIZE L

PAGE 34

SUMMIT
SIZE M

PAGE 36

EVEREST
SIZE M

PAGE 38

PROGUIDE
SIZE L

PAGE 40

JORASSES L
SIZE L

PAGE 42

JORASSES M
SIZE M

PAGE 44

ALL-TRACK

HILLDROP
SIZE L

PAGE 47

CINETIK 2.0 **NEW**
SIZE L

PAGE 49

WILD 2.0 **NEW**
SIZE M

PAGE 51

STRICKLAND
SIZE L

PAGE 53

NORTHSHORE
SIZE M

PAGE 55

UTOPIY
SIZE L

PAGE 57

HAKA
SIZE M

PAGE 59

WHISPER
SIZE M

PAGE 61

SPORT LIFESTYLE

IRON **NEW**
SIZE L

PAGE 64

PHØNIX **NEW**
SIZE M

PAGE 66

BAXTER
SIZE L


PAGE 68

QUEENSTOWN
SIZE L

PAGE 70

EMPIRE
SIZE L

PAGE 72

HIPE
SIZE L

PAGE 74

HACKER
SIZE M

PAGE 76

SUNRISE
SIZE S

PAGE 78

JUNIOR

CHOUKA
0-18 MONTHS

PAGE 81

KATCHOU **NEW**
0-18 MONTHS

PAGE 83

S'MILE
0-18 MONTHS

PAGE 85

S'KIMO
1-3 YEARS

PAGE 87

BALOO
1-3 YEARS

PAGE 89

FLIPPER
3-5 YEARS

PAGE 91

S'CALIBUR
3-5 YEARS

PAGE 93

S'TRIKE
3-5 YEARS

PAGE 95

S'PIES
3-5 YEARS

PAGE 97

ZAC
5-7 YEARS


PAGE 99

ELLA
5-7 YEARS

PAGE 101

SCRAT
7-10 YEARS

PAGE 103

AVATAR
7-10 YEARS

PAGE 105

KATNISS
7-10 YEARS

PAGE 107

COOPER
10-12 YEARS

PAGE 109

AYDEN **NEW**
10-12 YEARS

PAGE 111V1

ALL SKUS +

SKUS BY LENS TECHNO +

LENS

TECHNOLOGY

CÉBÉ SKYLAB

ZONE **VARIO**
GREY **CAT.0-3** Blue

ZONE
= MATERIAL

VARIO
= TECHNOLOGY

GREY
= BASE TINT

CAT.0-3
= LENS CATEGORY

Blue
= MIRROR TINT

PEAK = MINERAL LENS

SUPERIOR OPTICS

Thanks to its Abbe number⁽²⁾ (58) much higher than the one of polycarbonate (29), mineral lenses are the best for optical clarity. They also offer maximum scratch resistance and durability. The Cébé Peak lens is perfect in high-altitude, desert or other environments subject to exceptional light intensity or weather conditions.

2) Higher value means better optical quality. The Abbe value is used in RX to determine the geometry of the lens. For plano lenses, the Abbe value does not have an affect as they are 2mm thick.



PEAK
GREY **CAT.4** Silver



PEAK
GREY **CAT.4** Blue



ZONE = POLYCARBONATE LENS

IMPACT RESISTANT

20 times more impact resistant than glass and substantially lighter (the specific gravity⁽¹⁾ of a polycarbonate lens is 1.22g/cm³ compared to 2.53g/cm³ for a mineral lens), polycarbonate lenses offer the best combination of protection, performance and visual comfort. Our Sensor High-Contrast lenses are made of polycarbonate.

(1) Specific gravity describes the density of a lens material by comparing its density to the density of water.

ZONE = POLYCARBONATE LENS

PHOTOCHROMIC

SENSOR

POLARIZED



NEW

ZONE VARIO
GREY **CAT.0-3** Blue



VLT 84% - 9%



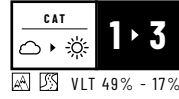
ZONE VARIO
GREEN **CAT.2-4** Silver



VLT 40% - 7%



SENSOR VARIO
ROSE **CAT.1-3** Silver



VLT 49% - 17%



SENSOR
ROSE **CAT.3** Silver



VLT 14%



ZONE
BROWN **CAT.4** Silver



VLT 4%



ZONE POLARIZED
GREY **CAT.3**



VLT 15%



ZONE POLARIZED
GREY **CAT.3** Silver



VLT 13%



ZONE
GREY **CAT.3**



VLT 14%



ZONE
GREY **CAT.3** Silver



VLT 15%



ZONE
GREY **CAT.3** Green



VLT 11%



ZONE
GREY **CAT.3** Red



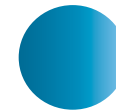
VLT 14%



ZONE
GREY **CAT.3** Pink



VLT 16%



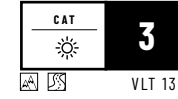
ZONE
GREY **CAT.3** Blue



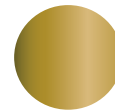
VLT 13%



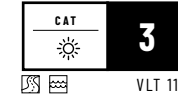
ZONE
BROWN **CAT.3**



VLT 13%



ZONE
BROWN **CAT.3** Gold



VLT 11%

JUNIOR LENSES



ZONE
YELLOW **CAT.0**



VLT 87%



ZONE
CLEAR **CAT.0**



VLT 92%



ZONE BLUE LIGHT
GREY **CAT.3**



VLT 9%

BLUE LIGHT
BLOCKING = 91%



ZONE BLUE LIGHT
GREY **CAT.3** Green



VLT 10%

BLUE LIGHT
BLOCKING = 89%



ZONE BLUE LIGHT
GREY **CAT.3** Red



VLT 14%

BLUE LIGHT
BLOCKING = 88%

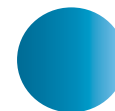


ZONE BLUE LIGHT
GREY **CAT.3** Pink



VLT 16%

BLUE LIGHT
BLOCKING = 94%



ZONE BLUE LIGHT
GREY **CAT.3** Blue

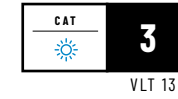


VLT 13%

BLUE LIGHT
BLOCKING = 91%



ZONE BLUE LIGHT
BROWN **CAT.3** Gold



VLT 13%







BLUE LIGHT
BLOCKING = 93%

LENS TECHNOLOGY

LENS BASE TINTS PERFORMANCE

<ul style="list-style-type: none"> + More versatile + Increases contrasts + True colour balance + Medium to bright conditions 	<p>ROSE VERSATILE LENS</p> 
<ul style="list-style-type: none"> + True colour perception + Comfort for eyes + Sunny to bright light conditions 	<p>GREY MAXIMUM GLARE REDUCTION</p> 
<ul style="list-style-type: none"> + Enhances contrast + Depth perception + Improves visual acuity + Reduces blue light + Variable light conditions 	<p>BROWN VISUAL ACUITY</p> 
<ul style="list-style-type: none"> + True colour balance + Slightly improves contrasts + Medium to bright conditions 	<p>GREEN MAINTAINS TRUE COLOUR</p> 
<ul style="list-style-type: none"> + Increases contrasts and reduces eye fatigue + Ideal light transmission + Cloudy and low light conditions + Indoor activity 	<p>YELLOW INCREASES CONTRASTS</p> 
<ul style="list-style-type: none"> + Perfect for extreme low light dusk and dawn 	<p>CLEAR MAXIMUM LIGHT TRANSMISSION</p> 

MIRROR COATING PERFORMANCE

	<p>Silver SHARPER VISION</p>	<ul style="list-style-type: none"> + Trendy urban look + Sharper vision + Less glare + Reduces eye fatigue
	<p>Green AMPLIFIES COLOUR</p>	<ul style="list-style-type: none"> + Amplifies colour contrasts + Amplifies visual definition
	<p>Red VERY BRIGHT CONDITIONS</p>	<ul style="list-style-type: none"> + Blocks red light for dry-eye prevention + Sunny and very bright conditions
	<p>Pink SHARPEN CONTRAST</p>	<ul style="list-style-type: none"> + Sharpens contrasts + Brightens targets + Similar to our Red Flash Mirror lending a feminine touch
	<p>Gold BRIGHTER FIELD OF VISION</p>	<ul style="list-style-type: none"> + Reflects extremely bright light + Darker field of vision with high contrast + Reduces eye strain + Trendy urban look
	<p>Blue FINE TUNES YOUR VISION</p>	<ul style="list-style-type: none"> + Absorbs reflections from mirrored surfaces + Diminishes harmful glare + Diminishes harmful blue light + Ideal for water sports in bright conditions

SENSOR

— HIGH CONTRAST VISION —



Cébé Sensor lenses are available in **category 3 and photochromic 1 to 3** and have a **unique transmittance curve** that aims to **increase visual contrast** and to give a **better colour definition** in order to **highlight obstacles on trails** & paths whatever the light conditions.

I love testing new products and I was immediately impressed by the Sensor technology! The shape of the Sunglasses is already well adapted to trail running and now, thanks to Sensor lenses, we are even closer to maximum efficiency. Sensor lenses give incomparable clarity and more accurate colours while enhancing the contrasts.

This enables me to be more in harmony with my surroundings and to avoid eye fatigue, especially during a long trail run.

François D'Haene



WHY IS SENSOR THE BEST HIGH CONTRAST LENS ?

1

GLOBAL OBJECTIVES

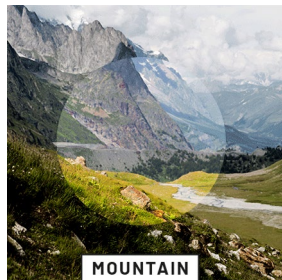
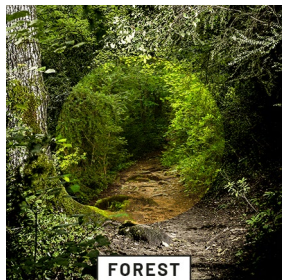
- + To highlight details on trails
- + To better distinguish rocks, roots and sand on critical paths
- + To better anticipate obstacles
- + To better see the relief on the ground
- + To better see the colour transitions

2

BENEFITS

- + The best visual comfort
- + A better performance
- + More pleasure when practicing sports

DEDICATED TO 3 SPECIFIC ENVIRONMENTS



A High-Contrast lens cannot perform at its best in all types of environments and this is what lead us to build our new lens offering.

We choose to concentrate on **3 specific environment**: forest and mountain, environments **historically linked to our brand**, and more urban environments because of the **evolution of sports practices**.

AVAILABLE ON



S'TRACK L



S'TRACK M



S'PRING 2.0



UPSHIFT



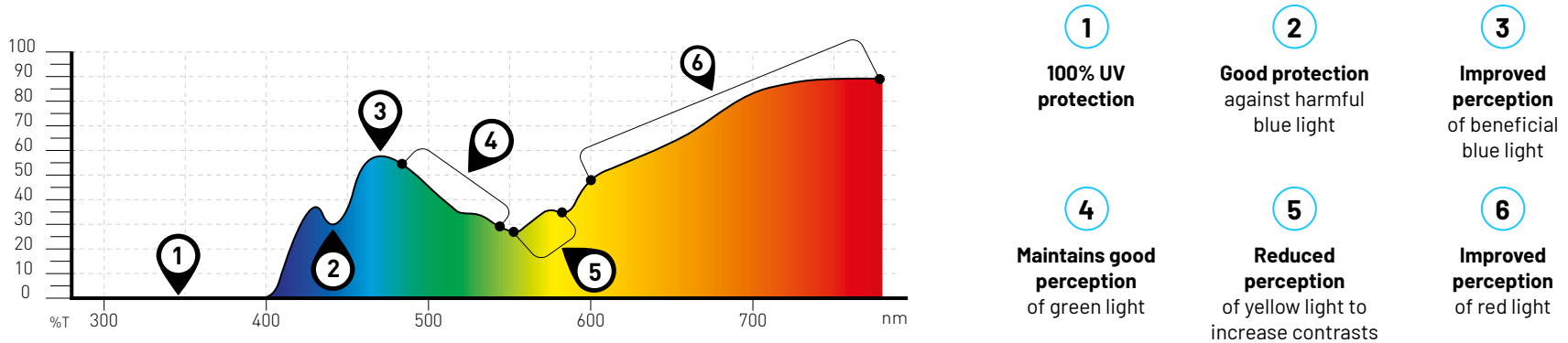
NORTHSHORE



HILLDROP

A UNIQUE SPECTRUM CURVE

In these environments, athletes need to **better distinguish the different shades of brown**. As the brown colour results from the **addition of red and green**, our objective was to **increase the perception of these two colours**. To achieve this, we built our lens of **injected polycarbonate with colour pigments and additional pigments** in order to create our **own spectrum curve**.



CÉBÉ SENSOR SKYLAB

PHOTOCHROMIC



SENSOR VARIO
ROSE CAT.1-3 Silver



SENSOR
ROSE CAT.3 Silver



ROSE BASE TINT PERFORMANCE

Versatile lens

- + More versatile
- + Increases contrasts
- + True colour balance
- + Medium to bright conditions

SILVER MIRROR COATING PERFORMANCE

Sharper vision

- + Trendy urban look
- + Less glare
- + Reduces eye fatigue

PEAK LENS



Cébé Peak lenses are made of **mineral**, the best material for **optical clarity** and **durability**. They are available in **category 4** and thus are perfect for **high-altitude** or other environments subject to **intense light** or weather conditions. Definitely the best choice for the Cébé mountaineering team!

AS A MOUNTAINEER, I AM SIMPLY "CLOSER" TO THE SUN. THAT'S WHY I NEED THE BEST PROTECTION FOR MY EYES. I NATURALLY CHOSE CÉBÉ SUNGLASSES FEATURING MINERAL LENSES. THEY ENSURE A GREAT PROTECTION AGAINST SUN RAYS AS THEY ARE IN CATEGORY 4 AND A CRYSTAL-CLEAR VISION. THEY ALSO OFFER OPTIMAL CONTRAST AND ENHANCE THE DEPTH PERCEPTION WHICH IS VITAL IN HIGH-MOUNTAIN ENVIRONMENT. EVEN AFTER DAYS, WEEKS OR MONTHS OF EXPOSURE TO EXTREME SUNNY CONDITIONS, MY EYES ARE NOT IRRITATED, SO I WILL FOR SURE CONTINUE TO WEAR THESE SUNGLASSES!

Marco Comfotola

PEAK LENS

WHY SHOULD YOU USE OUR PEAK LENSES?

100% UV PROTECTION

GOOD GLARE
REDUCTION

THE BEST
FOR OPTICAL CLARITY

TRUE COLOUR PERCEPTION

MAXIMUM
SCRATCH-RESISTANCE



MINERAL - CÉBÉ PEAK LENS

Superior optics

Thanks to its Abbe number⁽²⁾ (58) much higher than that of polycarbonate (29), mineral lenses are the best for optical clarity. They also offer maximum scratch resistance and durability. The Céb  Peak lens is perfect for high-altitude, desert or other environments subject to exceptional light intensity or weather conditions.

2) Higher value means better optical quality.
The Abbe value is used in RX to determine the geometry of the lens. For plano lenses, the Abbe value does not have an affect as they are 2mm thick.

C B  PEAK SKYLAB



PEAK
GREY CAT.4 Silver



PEAK
GREY CAT.4 Blue

PROTECT YOUR EYES AT HIGH-ALTITUDE

UV radiation increases by 4% for every 300 metre rise in altitude. Snow reflects up to 80% of the UV transmitted by the sun so eye protection is critical. Without adequate protection, the epithelium (the protective layer of the cornea) rapidly deteriorates, with the risk of causing a snow ophthalmia.

This inflammation of the cornea results in a painful burning sensation, along with red and watery eyes. In the longer term, UV exposure can lead to more serious pathologies: ocular lesions, premature cataracts or skin cancer around the eyes.

AVAILABLE ON



SUMMIT



EVEREST



PROGUIDE



JORASSES L



JORASSES M

BLUE *light* LENS



Cébé Zone Blue Light lenses excel at **preventing eye strain and damage to vision** in children, **filtering** up to 94% of **harmful blue light** while offering **100% UV protection**. Available in category 3, they improve **visual acuity** and provide **better colour perception**. Made of polycarbonate, they also ensure maximum **impact resistance** and **lightness**. In short, the perfect combination for children to enjoy their outdoor activities!

IN RECENT YEARS, WE HAVE BECOME FAR MORE AWARE OF THE HARMFUL EFFECTS OF BLUE LIGHT ON THE EYES, ESPECIALLY IN YOUNG CHILDREN AS A MOTHER, IT IS ESSENTIAL FOR ME TO PROTECT MY SON, ESPECIALLY IN TERMS OF HIS HEALTH SO I SPECIFICALLY CHOSE CÉBÉ TO PROTECT HIS EYES. I CHOSE THEM MAINLY FOR THEIR BLUE LIGHT LENSES AND CATEGORY 3 PROTECTION (WHICH MAKES IT POSSIBLE TO DISTINGUISH COLOURS CLEARLY, UNLIKE DARKER LENSES) I ALSO LIKE THE STYLE AND COMFORT OF THE FILMS VERY COVERING FOR EVEN MORE PROTECTION, ULTRA-DELICATE AND COLOURFUL MY SON HAS LIKENEDLY ADOPTED THEM AND NOW WANTS TO WEAR THEM AS SOON AS THE SON COMES UP!



BLUE *light* LENS

WHY SHOULD KIDS USE OUR JUNIOR LENSES ?

▼
PREVENT EYE STRAIN
AND DAMAGE TO VISION!

▼
SEE EVERYTHING
WITH **BETTER DEPTH**
PERCEPTION!

▼
IMPROVE **VISUAL**
ACUITY AND PROVIDE BETTER
COLOUR PERCEPTION!

▼
OUR BLUE LIGHT FILTER
IS **SPECIAL PIGMENTS**
IN **THE LENS MASS ITSELF!**

▼
BLOCK HARMFUL
HIGH ENERGY BLUE LIGHT
(HEV)!

▼
100%
UV PROTECTION!

EXCELLENT AND NATURAL PERCEPTION



A grey category 3 lens provides excellent and natural perception of surroundings (unlike many category 4 children's lenses which can in fact be dangerous as children may not be able to distinguish stop signs while walking or riding their bike).

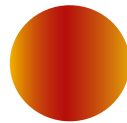
CÉBÉ ZONE JUNIOR SKYLAB



ZONE **BLUE LIGHT**
GREY **CAT. 3**



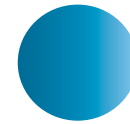
ZONE **BLUE LIGHT**
GREY **CAT. 3** Green



ZONE **BLUE LIGHT**
GREY **CAT. 3** Red



ZONE **BLUE LIGHT**
GREY **CAT. 3** Pink



ZONE **BLUE LIGHT**
GREY **CAT. 3** Blue



NEW
ZONE **BLUE LIGHT**
BROWN **CAT. 3** Gold

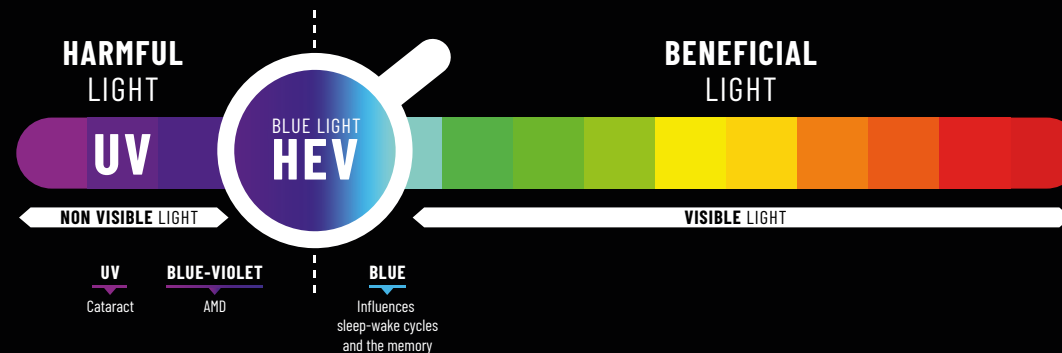
BLUE *light* LENS

PROTECT YOUR CHILDREN FROM BLUE LIGHT

15 TIMES MORE HARMFUL

WHAT ABOUT BLUE LIGHT?

Also called HEV (High-Energy Visible) light, blue light is the highest frequency light in the visible spectrum. It is known to be 15 times more harmful to the retina than other colours in the spectrum. HEV light causes photochemical lesions in retinal cells. This deterioration of retinal cells causes cataracts and Age-Related Macular Degeneration (AMD or ARMD), which can lead to significant vision loss.



YOUNG RETINAS ARE SENSITIVE

WHY DO KIDS NEED SPECIAL EYE PROTECTION?

- + Because children generally receive 3 times the annual sun exposure of adults, some experts say that half of a person's lifetime of exposure to UV is attained by early adulthood.
- + Young eyes are especially susceptible to damage from light. The retina at the back of the eyes are particularly sensitive due to the fact that a child's ocular lens cannot effectively filter UV-related and blue light.
- + Nearly all blue light reaches the retinas of children because the cornea and lens are not capable of absorbing these rays.



Cébé Nano Active Design, compatible with **99% of prescription** lenses, combines prescription-ready frames with very **thin and lightweight lenses** making it the **most advanced prescription program**. Cébé has also developed a tool crafted for professionals; the **Webshop** allows the assessment of the **suitability of prescription sunglasses** in real-time, to **place orders** and **track production**.

FOR SEVERAL YEARS NOW, I HAVE CONFIDENTLY BEEN ENCOURAGING MY CUSTOMERS TO CHOOSE CÉBÉ NANO ACTIVE DESIGN ~~OF~~ CORRECTIVE LENSES, WHATEVER THEIR PRESCRIPTION (SINGLE VISION, MULTIFOCAL, HIGH MYOPIA, ETC.) TO PROVIDE THEM WITH OPTIMAL VISION. MOST OF THEM ARE ATHLETES WHO ARE LOOKING FOR SPECIFIC SUNGLASSES ADAPTED TO THEIR SPORT AND WHO NEED LENSES FOR THEIR EYESIGHT. WITH ITS RX PROGRAM, CÉBÉ ADDRESSES ALL THESE ISSUES: SPORTS & TECHNICAL STYLES ARE AVAILABLE, THERE IS A WIDE CHOICE OF LENSES AND THEIR OFFER COVERS 99% OF PRESCRIPTIONS. THE ~~RX~~ WEBSHOP IS EASY TO USE AND TO CREATE A PERSONALIZED PAIR OF SUNGLASSES. I OFTEN PLACE MY ORDERS WHEN MY CUSTOMERS ARE WITH ME. FINALLY, THIS PRESCRIPTION PROGRAM HAS ALLOWED ME TO ~~PREVENT~~ AFFIRM MY SPECIALIZATION IN THE FIELD OF VISUAL SPORTS & IMPROVE MY REPUTATION. AND ALSO IT'S A REAL PLEASURE FOR ME, DURING MY OWN SPORTING ACTIVITIES.

JULIEN CABASSA
HYPER-LUNETTES



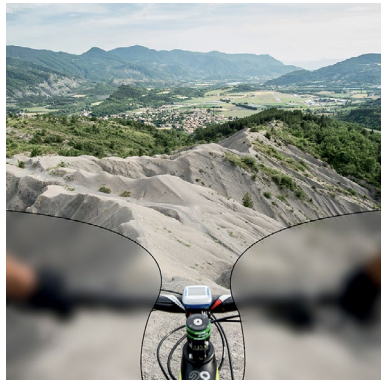
WHAT ABOUT OUR PRESCRIPTION PROGRAM ?

▼
AVAILABLE IN **99%**
OF PRESCRIPTIONS

▼
FROM **+6.00** TO **-8.00**
(WITH A CYLINDRICAL 4)

▼
THINNER AND LIGHTER
LENSES

2 CÉBÉ FREEFORM PROGRESSIVE LENSES



ADRENALINE DESIGN

RECOMMENDED FOR ACTIVE USE

Enjoy what's ahead, stay focused on your target, and keep it in view. Freeform progressive lenses with an **enhanced field of view** for long distances. **Corridor and close ranges** have more restricted vision.

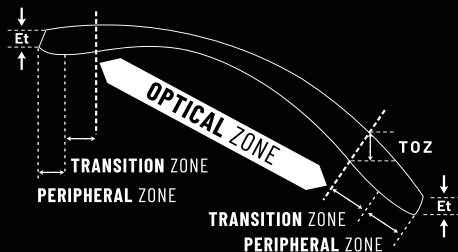


OUTDOOR DESIGN

RECOMMENDED FOR DAILY USE

Short-sight, long-sight: **no compromise, just one objective**, your vision. Multi-purpose Freeform progressive lenses offer a **wide field of vision** at near and distant ranges.

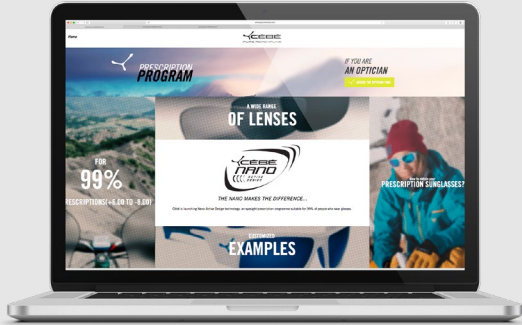
72% THINNER AND 45% LIGHTER



Et : Edge thickness
TOZ : Thickness Optical Zone

Software using the most advanced calculations is used to create **customized lenses** and the ultimate in lightweight products. Our patented lens-thinning algorithm produces a **fashionable and functional lens** with a large, central optical zone (US Patent number 8,002,404).

Every prescription is reassessed to compensate for optical distortions related to the frame wrap angle. **Every product is customized to the prescription, frame and wearer's facial metrics.**



THE NANO ACTIVE DESIGN
WEBSHOP

Only 4 steps
to choose your RXable sunglasses!

- 1**
Choose your **FRAME** model and color
- 2**
Choose your **LENS** type and color
- 3**
Input the **PRESCRIPTION**
- 4**
Add to your basket and **VALIDATE** your order

ALMOST ALL STYLES ARE AVAILABLE IN PRESCRIPTION.
PLEASE REFER TO THE WEBSHOP FOR FURTHER DETAILS.

WWW.BOLLEBRANDS-RX.COM

CÉBÉ NANO SKYLAB

PHOTOCHROMIC

		SENSOR					
ZONE VARIO GREY CAT.0-3 Blue	ZONE VARIO GREEN CAT.2-4 Silver	<i>SENSOR VARIO</i> ROSE CAT.1-3 Silver	<i>SENSOR</i> ROSE CAT.3 Silver	ZONE BROWN CAT.4	ZONE BROWN CAT.4 Silver		

POLARIZED

ZONE POLARIZED GREY CAT.3	ZONE POLARIZED GREY CAT.3 Silver	ZONE POLARIZED GREY CAT.3 Green	ZONE POLARIZED GREY CAT.3 Red	ZONE POLARIZED GREY CAT.3 Blue	ZONE GREY CAT.3		
ZONE GREY CAT.3 Silver	ZONE GREY CAT.3 Green	ZONE GREY CAT.3 Red	ZONE GREY CAT.3 Blue	ZONE BROWN CAT.3			
ZONE YELLOW CAT.0	ZONE CLEAR CAT.0						

ZONE LENS TECHNOLOGY



SAME LENS



PHOTOCHROMIC LENSES

ULTIMATE ADAPTABILITY

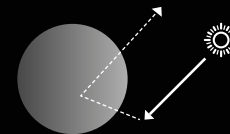
CÉBÉ ZONE VARIO



Photochromic lenses function by darkening or lightening depending on the amount of ultraviolet rays emitted by the sun.

With our photochromic lenses Zone Vario, available in **category 0 to 3** and **2 to 4**, that adapt to weather variations in less than 20 seconds (recorded at 23°C), Cébé offers a real solution in providing premium vision and comfort under diverse light conditions.

CÉBÉ ZONE POLARIZED



POLARIZED LENSES

AVOID GLARE

When light is reflected from flat surfaces like the road, water, hoods of car, etc, it becomes polarized as it travels in a more constant direction, usually horizontally. This creates a disturbing, dangerous and at times blinding intensity of reflected light.

Our Cébé Zone Polarized lenses contain a filter that blocks this intense reflected light thus reducing glare. It helps to reduce eye fatigue and ensures optimal vision.

LENS TREATMENT

ANTI-REFLECTIVE COATING

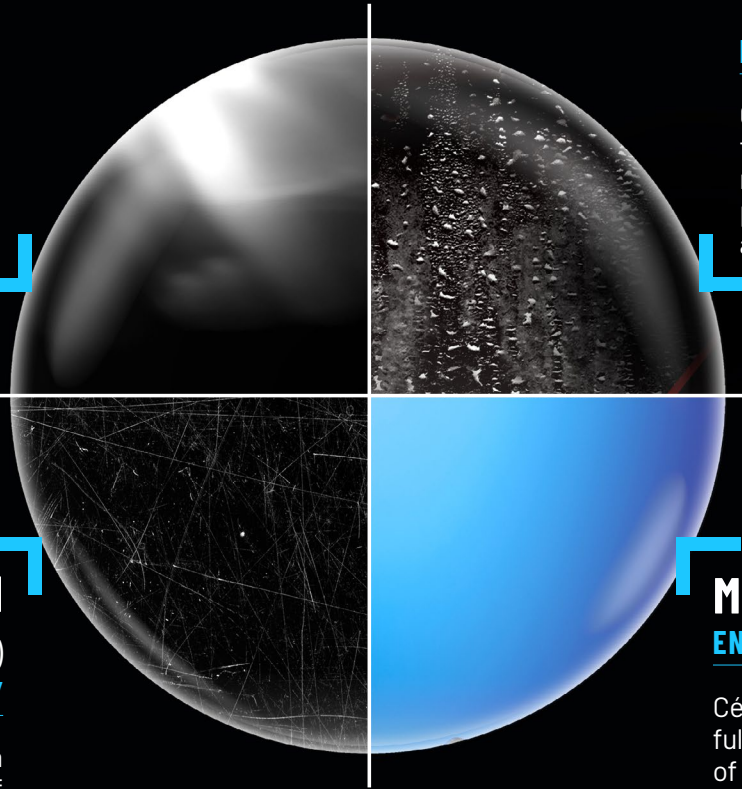
ELIMINATES BACK GLARE

Applied to the back side of the lenses, an anti-reflective coating eliminates the negative effects of back glare to effectively prevent eye fatigue and provide premium optical quality.

ANTI-FOG COATING

FOR CRYSTAL-CLEAR VISION

Cébé's anti-fog coating is applied to the inside of the lens, dispersing water molecules across its surface and preventing the build-up of condensation and moisture.



ANTI-SCRATCH COATING (BAYER TESTED)

FOR MORE DURABILITY

Our specially formulated anti-scratch hard coating applied to the outside of the lens increases the lens hardness thus improving scratch and abrasion resistance. Our coating also builds a better foundation for the adhesion of mirrored coating.

MIRRORED COATING

ENHANCES FILTRATION PERFORMANCE

Cébé Flash Mirror lenses have a uniformly and fully mirrored coating applied to the surface of lenses, on the centre and sides, unlike the traditional type of mirror coating. This offers a better look, a uniformed eye perception and enhanced filtration performance.

FRAME

TECHNOLOGY

FRAME TECHNOLOGY

BASE CURVE

The right base for the right use

The base curve corresponds to the **radius of the sphere** of the back surface of the lens.
The lower the number, the flatter the style.



COMFORT

ADJUSTABLE NOSE PADS

FOR A PERFECT FIT

Flexible rubber material which adapts perfectly to the shape of the nose giving maximum comfort.



ADJUSTABLE TEMPLES FOR COMFORT AND STABILITY

The temple tips made with a wire core co-injected with rubber material allow you to adjust your sunglasses for a perfect fit.



ANTI-SLIP RUBBER FOR A NON SLIP GRIP

Rubber insert on the nose pads or temples for enhanced comfort.



DOUBLE INJECTION FLEXIBLE FRAME

Rubber and plastic parts of the frame are double injected. This means more flexible frames for maximum comfort and no pressure points.



VISION

VENTILATED FRAME

FOR A CRYSTAL-CLEAR VISION

Air vents located on the side or underside of the frame allow air circulation to prevent fogging.



INTERCHANGEABLE LENS

THE PERFECT LENS WHATEVER THE WEATHER CONDITIONS

Quick and practical lens changing system, allowing you to go out no matter the weather conditions. A selection of Cébé models is supplied with 1 or 2 spare lenses.



PRESCRIPTION SUPPORT PROGRAM

FOR PRESCRIPTION WEARERS

The Cébé optical clip can be easily put in place to provide the corrective vision required while maintaining a wide field of vision. It's compatible with Cinetik 2.0, Wild 2.0 and Hilldrop styles.

SKU: CBCLIP1



SAFETY

LATERAL PROTECTION

FOR MAXIMUM COVERAGE

Integrated, magnetic or removable, for the best protection against side glare, wind and debris.



STRAP KIDS & ADULTS

FOR SAFETY AND STABILITY

To ensure kids keep their sunglasses firmly on their head, all Junior styles (except Avatar, Katniss, Cooper and Ayden) are delivered with a strap.

Cébé also developed an adjustable strap suited to adults styles with a hole at the temple tips (Proguide, Jorasses L & M and Strickland).

SKU: STRAPMOUNTAIN



S'TECH™



Designed for and with sport champions, S'TECH™ technology is engineered with a **spatula on the inside of each temple** curving to a **V-shape** creating **two additional contact points**. This results in a **better balance of the weight of the sunglasses** and ensures a **perfect hold on the face**.

DISCOVER THE 3 S'TECH™ CATEGORIES

MEN

S'TECH™, DESIGNED FOR AND WITH SPORT CHAMPIONS

In addition to the original construction (1), an ultimate modification (2) has been engineered for mountain bikers, with a **spatula directly integrated into the temple** and not removable, to improve strength and facilitate your sunglasses-helmet combo.



1

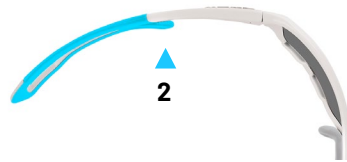
AVAILABLE ON



S'TRACK L



S'TRACK M



2

AVAILABLE ON



UPSHIFT

WOMEN

S'TECH™ DESIGNED FOR LONG HAIR

New configuration **to prevent hair getting stuck** in the temples, but with the same technology.



AVAILABLE ON

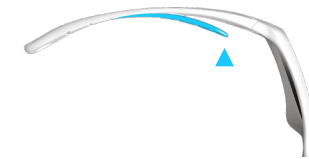


S'PRING 2.0

JUNIOR

S'TECH™ FOR JUNIORS

S'TECH™ technology now adapted for children, made with **soft and flexible materials**. Top stability even during play!



AVAILABLE ON



S'MILE



S'KIMO



S'CALIBUR



S'PIES

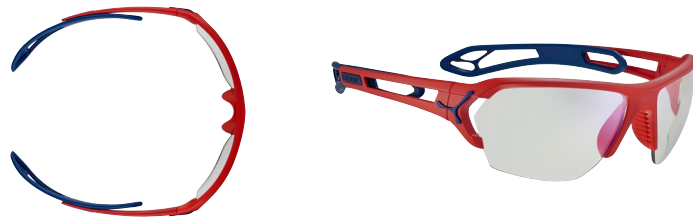


S'TRIKE

CORRE





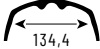


S'TRACK L



PERFECT FOR TRAIL RUNNING OR MOUNTAIN BIKING

Developed for experienced sportsmen, the S'Track L revolutionizes the concept of on-face stability thanks to Cébé S'Tech™ technology.

And because vision is key, this style is available with Sensor high-contrast lenses.

BASE 8	SIZE L	 68 x 43,5	 18,5	 134,4	 121	 28g
------------------	------------------	--	---	--	--	--

LENS

→ Available with *SENSOR*

- + Polycarbonate
- + Anti-fog coating
- + Anti-scratch coating
- + Interchangeable lenses
- + Available with **photochromic lenses**
- + Available with **polarized lenses**
- + 1 photochromic or 2 non photochromic lenses included

FRAME

→ Cébé exclusive **S'TECH™**

- + TR90 + rubber
- + Double injected frame
- + Anti-slip rubber nose pads
- + Anti-slip rubber temple tips

COLOURWAYS (see next page)



S'TRACK L

SKUS



CBS154 **NEW**

MATT RED BLUE

Zone **VARIO** Grey
CAT.0-3 Blue AF



CBS058

MATT GREY LIME

Zone Grey **CAT.3** Green AF
 + Zone Clear **CAT.0** AF



CBS078 **NEW**

MATT NEON ORANGE BLACK

SENSOR **VARIO** Rose
CAT.1-3 Silver AF



CBSTL16

MATT CIMENT BLUE

Zone Grey **CAT.3** Blue AF
 + Zone Clear **CAT.0** AF



CBS107 **NEW**

MATT BLACK SILVER

SENSOR **VARIO** Rose
CAT.1-3 Silver AF



CBSTL13

MATT BLACK BLUE

Zone Grey **CAT.3** Silver AF
 + Zone Clear **CAT.0** AF



CBS104 **NEW**

MATT NAVY LIME

Zone **VARIO** Grey
CAT.0-3 Blue AF



CBSTL15

MATT BLACK RED

Zone **POLARIZED** Grey
CAT.3 Silver AF
 + Zone Clear **CAT.0** AF



REPLACEMENT LENSES (PAIR: L+R)



CBRLSTL9

SENSOR **VARIO** Rose
CAT.1-3
 Silver AF

NEW



CBRLSTL10

Zone **VARIO** Grey
CAT.0-3
 Blue AF



CBRLSTL7

Zone **POLARIZED** Grey
CAT.3
 Silver AF



CBRLSTL8

Zone Grey
CAT.3
 Green AF



CBRLSTL2

Zone Grey
CAT.3
 Blue AF



CBRLSTL4

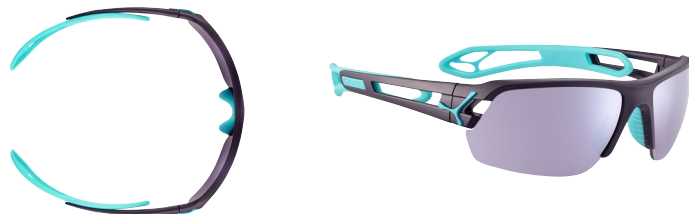
Zone Grey
CAT.3
 Silver AF



CBRLSTL0






Zone Clear
CAT.0
 AF

S'TRACK M



PERFECT FOR TRAIL RUNNING OR MOUNTAIN BIKING

Designed for medium size faces, the S'Track M is ultra-stable, ultra-comfortable and ultra-ventilated. It combines Cébé's best technologies such as S'Tech™ and Sensor high-contrast lenses.

BASE 8	SIZE M	 69,3 x 39,4	 18,4	 129,3	 116	 26g
------------------	------------------	--	---	--	--	--

LENS

→ Available with *SENSOR*

- + Polycarbonate
- + Anti-fog coating
- + Anti-scratch coating
- + Interchangeable lenses
- + Available with **photochromic lenses**
- + Available with **polarized lenses**
- + 1 photochromic or 2 non photochromic lenses included

FRAME

→ Cébé exclusive **S'TECH™**

- + TR90 + rubber
- + Double injected frame
- + Anti-slip rubber nose pads
- + Anti-slip rubber temple tips

COLOURWAYS (see next page)



S'TRACK M

SKUS



CBS081 **NEW**

MATT PLUM TURQUOISE

SENSOR Rose
CAT.3 Silver AF
 + **Zone** Clear **CAT.0** AF
 ● + ○



CBS080 **NEW**

MATT NAVY RED

SENSOR VARIO Rose
CAT.1-3 Silver AF
 ○



CBS113 **NEW**

MATT BLACK

SENSOR VARIO Rose
CAT.1-3 Silver AF
 ○



CBS155 **NEW**

MATT NEON ORANGE NAVY

Zone *VARIO* Grey
CAT.0-3 Blue AF
 ●



CBSTM17

MATT BLACK BLUE

Zone **POLARIZED** Grey
CAT.3 Silver AF
 + **Zone** Clear **CAT.0** AF
 ● + ○



CBS079 **NEW**

MATT LAGOON ORANGE

Zone Grey **CAT.3** Blue AF
 + **Zone** Clear **CAT.0** AF
 ● + ○



CBSTM15

MATT BLACK RED

Zone Grey **CAT.3** Red AF
 + **Zone** Clear **CAT.0** AF
 ● + ○



CBSTM14

MATT BLACK BLUE

Zone Grey **CAT.3** Silver AF
 + **Zone** Clear **CAT.0** AF
 ● + ○

REPLACEMENT LENSES (PAIR: L+R)



CBRLSTM9

SENSOR VARIO Rose
CAT.1-3
 Silver AF



CBRLSTM8

SENSOR Rose
CAT.3
 Silver AF

NEW



CBRLSTM10

Zone *VARIO* Grey
CAT.0-3
 Blue AF



CBRLSTM7

Zone **POLARIZED** Grey
CAT.3
 Silver AF



CBRLSTM2

Zone Grey
CAT.3
 Blue AF



CBRLSTM1

Zone Grey
CAT.3
 Red AF



CBRLSTM4

Zone Grey
CAT.3
 Silver AF



CBRLSTM0



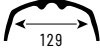


Zone Clear
CAT.0
 AF

S'PRING 2.0



PERFECT FOR TRAIL RUNNING OR MOUNTAIN BIKING

With its revised front frame, the S'Pring 2.0 fits your face even better during your training sessions. Adapted for long hair, Céb  exclusive S'Tech™ technology provides the best stability in every situation.

BASE 8	SIZE M	 67,5 x 42,2	 20,2	 129	 114,4	 27g
-----------	-----------	--	---	--	--	--

LENS

→ Available with *SENSOR*

- + Polycarbonate
- + Anti-fog coating
- + Anti-scratch coating
- + Interchangeable lenses
- + Available with **photochromic lenses**
- + 1 photochromic or 2 non photochromic lenses included

FRAME

→ Céb  exclusive **S'TECH™**

- + TR90 + rubber
- + Double injected frame
- + Anti-slip rubber nose pads
- + Anti-slip rubber temple tips

COLOURWAYS (see next page)



S'PRING 2.0

SKUS



CBS108 **NEW**

MATT BLACK BLUE

Zone **VARIO** Grey
CAT.0-3 Blue AF



CBS044

MATT BLUE GRADIENT PINK

SENSOR **VARIO** Rose
CAT.1-3 Silver AF



CBS043

MATT BLACK PINK

SENSOR Rose
CAT.3 Silver AF
+ Zone Clear CAT.0 AF



REPLACEMENT LENSES (PAIR: L+R)



CBRLSPRI3

SENSOR **VARIO** Rose
CAT.1-3
Silver AF



CBRLSPRI4

SENSOR Rose
CAT.3
Silver AF



CBRLSPRI6

Zone **VARIO** Grey
CAT.0-3
Blue AF



CBRLSPRI5






Zone Clear
CAT.0
AF

UPSHIFT



PERFECT FOR TRAIL RUNNING OR MOUNTAIN BIKING

An emanation of S'Tech™ technology now directly integrated in the temples, combined with large coverage and ultra-ventilated Sensor lenses, the Upshift style delivers perfect fit and unparalleled vision.

BASE 8	SIZE L	 65 x 43	 19,8	 134	 125,1	 35g
-----------	-----------	--	---	--	--	--

LENS

→ Available with *SENSOR*

- + Polycarbonate
- + Anti-fog coating
- + Anti-scratch coating
- + Available with **photochromic lenses**

FRAME

→ Cébé exclusive **S'TECH™**

- + TR90 + rubber
- + Double injected frame
- + Ventilated frame
- + Adjustable nose pads
- + Anti-slip rubber nose pads
- + Anti-slip rubber temple tips

COLOURWAYS (see next page)



UPSHIFT

SKUS



CBS005

MATT BLACK RED

Zone Grey **CAT.3** Red AF



CBS006

MATT GREY ORANGE

SENSOR VARIO Rose

CAT.1-3 Silver AF



CBS159

NEW

MATT BLACK LIME

SENSOR Rose

CAT.3 Silver AF



CBS001

MATT BLACK BLUE

Zone Grey **CAT.3** Blue AF








SUMMIT



PERFECT FOR MOUNTAIN ACTIVITIES

A more modern shape for Céb 's emblematic design: glacier sunglasses.

A good-looking vintage frame associated with many specs which will make sure you're perfectly protected during your explorations: features leather side shields and available with category 4 Peak mineral lenses.

BASE 8	SIZE M	 58,7 x 48,1	 20,4	 136,4	 131,4	 42g (mineral) 31g (PC)
------------------	------------------	--	---	--	--	--

LENS

- + Polycarbonate & Mineral
- + Anti-reflective coating
- + Anti-fog coating
- + Anti-scratch coating
- + Available with **photochromic lenses**
- + Available with **polarized lenses**

FRAME

- + TR90 + rubber
- + Lateral protection
- + Adjustable temple tips
- + Anti-slip rubber nose pads
- + Anti-slip rubber temple tips
- + Delivered with a strap

COLOURWAYS (see next page)



SUMMIT

SKUS



CBS109

NEW

MATT NAVY RED WHITE

Zone POLARIZED Grey
CAT.3 Silver



CBSUM4

MATT BLACK LIME

Zone VARIO Green
CAT.2-4 Silver AF



CBSUM2

MATT BLACK BLUE

Peak Grey **CAT.4** Blue AR



CBSUM1

MATT BLACK SILVER

Peak Grey **CAT.4** Silver AR



CBSUM3

MATT BLACK RED

Zone Brown **CAT.4** Silver AR








EVEREST



PERFECT FOR MOUNTAIN ACTIVITIES

Everest is the style for mountaineers:

magnetic side shields, a new strap fixture and category 4 mineral lenses for superior clarity and scratch resistance.

BASE 8	SIZE M	 58,5 x 41,7	 17,6	 128,5	 122,1	 44g (mineral) 34g (PC)
------------------	------------------	--	---	--	--	--

LENS

- + Polycarbonate & Mineral
- + Anti-reflective coating
- + Anti-fog coating
- + Anti-scratch coating
- + Available with **photochromic lenses**

FRAME

- + TR90 + rubber
- + Double injected frame
- + Magnetic lateral protection
- + Anti-slip rubber nose pads
- + Anti-slip rubber temple tips
- + Delivered with a strap

COLOURWAYS (see next page)



EVEREST

SKUS



CBS084 **NEW**

MATT GUNMETAL YELLOW
Zone Brown CAT.4 Silver AF



CBS100 **NEW**

MATT BLACK
Zone VARIO Green
CAT.2-4 Silver AF



CBS019

MATT BLACK GREY
Peak Grey CAT.4 Blue AR



CBS020

MATT GREY BLUE
Peak Grey CAT.4 Silver AR



CÉBÉ UNIVERSAL STRAP








STRAPMOUNTAIN

PROGUIDE



PERFECT FOR MOUNTAIN ACTIVITIES

Developed in partnership with mountain guides, the Proguide is perfect for mountain excursions. In all seasons, its photochromic lenses and its side shields will protect all mountaineers.

BASE 8	SIZE L	 72,1 x 46,2	 17	 134,4	 130,6	 40g (mineral) 34g (PC)
------------------	------------------	--	---	--	--	--

LENS

- + Polycarbonate & Mineral
- + Anti-reflective coating
- + Anti-fog coating
- + Anti-scratch coating
- + Available with **photochromic lenses**

FRAME

- + TR90 + rubber
- + Double injected frame
- + Ventilated frame
- + Lateral protection
- + Anti-slip rubber nose pads
- + Anti-slip rubber temple tips
- + Compatible with Céb  universal strap

COLOURWAYS (see next page)



PROGUIDE

SKUS



CBPROG6

MATT WHITE BLACK

Zone **VARIO** Green
CAT.2-4 Silver AF

●



CBS028

MATT GREY GREEN

Zone **VARIO** Green
CAT.2-4 Silver AF

●



CBPROG1

MATT BLACK BLUE

Peak Grey CAT.4 Blue AR

●



CBS039

MATT PETROL ORANGE

Peak Grey CAT.4 Silver AR

●



CBPROG8

MATT BLACK RED

Zone Brown CAT.4 Silver AF

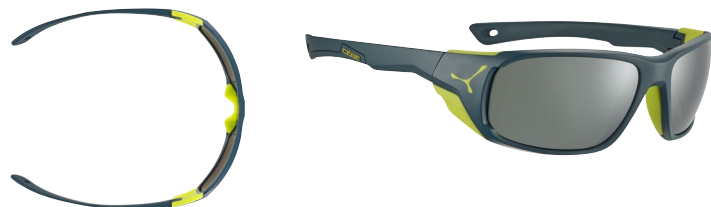
●

CÉBÉ UNIVERSAL STRAP








STRAPMOUNTAIN

JORASSES L



PERFECT FOR MOUNTAIN ACTIVITIES

This design features all the technologies an outdoor enthusiast needs: available with category 4 mineral lenses and anti-scratch coating for perfect vision, side protections and compatible with our universal strap.

BASE 8	SIZE L	 63,1 x 41,1	 16,2	 134,7	 130	 42,5g (mineral) 34,5g (PC)
------------------	------------------	--	---	--	--	--

LENS

- + Polycarbonate & Mineral
- + Anti-reflective coating
- + Anti-fog coating
- + Anti-scratch coating
- + Available with **photochromic lenses**

FRAME

- + TR90 + rubber
- + Double injected frame
- + Lateral protection
- + Anti-slip rubber nose pads
- + Compatible with Céb  universal strap

COLOURWAYS (see next page)



JORASSES L

SKUS



CBS023

MATT PETROL LIME

Peak Grey **CAT.4** Silver AR



CBJ0L8

MATT GREY BLUE

Zone **VARIO** Green
CAT.2-4 Silver AF



CBS110

NEW

MATT WHITE BLUE

Peak Grey **CAT.4** Blue AR



CBJ0L1

MATT BLACK RED

Zone Brown **CAT.4** Silver AF



CÉBÉ UNIVERSAL STRAP







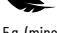
STRAPMOUNTAIN

JORASSES M



PERFECT FOR MOUNTAIN ACTIVITIES

A medium model designed to help you fully enjoy mountain landscapes!
A large choice of lenses (mineral in category 4, photochromic, polarized...) and side protection blocks harmful sun rays, even at high altitude.

BASE 8	SIZE M	 58,7 x 38	 17,2	 127,9	 130	 37,5g (mineral) 31g (PC)
------------------	------------------	--	---	--	--	--

LENS

- + Polycarbonate & Mineral
- + Anti-reflective coating
- + Anti-fog coating
- + Anti-scratch coating
- + Available with **photochromic lenses**
- + Available with **polarized lenses**

FRAME

- + TR90 + rubber
- + Double injected frame
- + Lateral protection
- + Anti-slip rubber nose pads
- + Compatible with Céb  universal strap

COLOURWAYS (see next page)



JORASSES M

SKUS



CBJOM4

MATT DARK BLUE BLUE

Zone **VARIO** Green
CAT.2-4 Silver AF

●



CBS025

MATT GREY LIME

Peak Grey CAT.4 Silver AR

●



CBS024

MATT PETROL ORANGE

Zone Brown CAT.4 Silver

●



CBJOM1

MATT BLACK PINK

Zone Brown CAT.4 Silver AF

●



CBJOM3

MATT BLACK TURQUOISE

Zone **POLARIZED** Grey
CAT.3 Silver AF

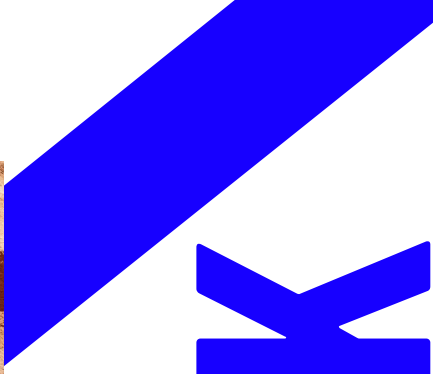
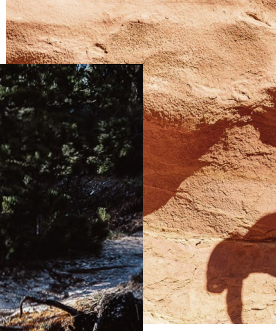
●

CÉBÉ UNIVERSAL STRAP

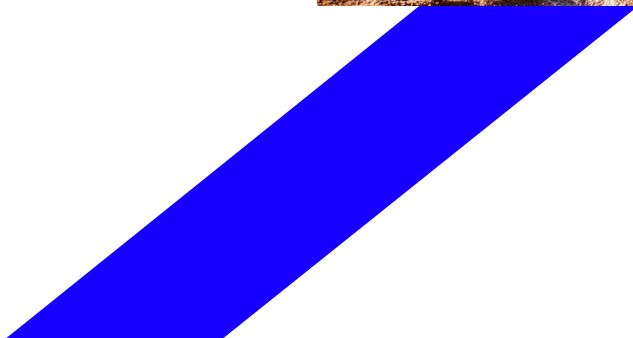


STRAPMOUNTAIN

ALL








TRACK



HILLDROP



This half-rim design has been specifically developed with a large eye shape for maximum field of vision and protection against elements (projectiles, dust...). With its more aggressive lines, the Hilldrop definitely imposes its personality.

BASE 8	SIZE L	 73,4 x 46,5	 17,3	 136	 133,5	 30g
------------------	------------------	--	---	--	--	--

LENS

→ Available with *SENSOR*

- + Polycarbonate
- + Anti-scratch coating
- + Interchangeable lenses
- + Available with **photochromic lenses**
- + 1 photochromic or 2 non photochromic lenses included

FRAME

- + TR90 + rubber
- + Ventilated frame
- + Adjustable nose pads
- + Anti-slip rubber nose pads
- + Anti-slip rubber temple tips
- + Optical clip compatible

COLOURWAYS (see next page)



HILLDROP

SKUS



CBS014

MATT GREY SHINY LIME

Zone Grey CAT.3 Green
+ Zone Clear CAT.0



CBS016

MATT BLACK SHINY RED

SENSOR VARIO Rose
CAT.1-3 Silver



CBS160

NEW

MATT BLACK

SENSOR Rose
CAT.3 Silver
+ Zone Clear CAT.0



CBS012

MATT GREY SHINY ORANGE

Zone Grey CAT.3 Red
+ Zone Clear CAT.0



REPLACEMENT LENSES (PAIR: L+R)



CBRLHILL5

SENSOR VARIO Rose
CAT.1-3
Silver



CBRLHILL3

Zone Grey
CAT.3
Green



CBRLHILL1

Zone Grey
CAT.3
Red

NEW



CBRLHILL6

Zone Clear
CAT.0

OPTICAL CLIP








CBCLIP1

CINETIK 2.0 **NEW**



Sharper lines for a more aggressive look!

Compatible with the Céb  RX optical clip and delivered with additional pairs of lenses, crystal-clear vision definitively remains the focus of this style.

BASE 8	SIZE L	 75,4 x 42,6	 15,8	 135	 128,6	 27g
------------------	------------------	--	---	--	--	--

LENS

- + Polycarbonate
- + Anti-scratch coating
- + Interchangeable lenses
- + Available with **photochromic lenses**
- + Available with **polarized lenses**
- + 2 or 3 lenses included

FRAME

- + TR90 + rubber
- + Ventilated frame
- + Adjustable nose pads
- + Anti-slip rubber nose pads
- + Anti-slip rubber temple tips
- + Optical clip compatible

COLOURWAYS (see next page)



CINETIK 2.0

NEW

SKUS



CBS101

MATT NEON ORANGE

Zone **VARIO** Grey
 CAT.0-3 Blue
 + Zone Clear CAT.0



CBS087

MATT BLACK GREY

Zone **VARIO** Grey
 CAT.0-3 Blue
 + Zone Clear CAT.0



CBS092

SHINY BLACK BLUE

Zone **POLARIZED** Grey
 CAT.3 Silver



CBS091

MATT GRAPHITE LIME

Zone Grey CAT.3 Green
 + Zone Yellow CAT.0
 + Zone Clear CAT.0



CBS088

SHINY WHITE BLUE

Zone Grey CAT.3 Blue
 + Zone Yellow CAT.0
 + Zone Clear CAT.0



CBS090

MATT BLACK RED

Zone Grey CAT.3 Red
 + Zone Yellow CAT.0
 + Zone Clear CAT.0



CBS093

MATT NAVY ORANGE

Zone Grey CAT.3
 + Zone Yellow CAT.0
 + Zone Clear CAT.0



OPTICAL CLIP



CBCLIP1

REPLACEMENT LENSES (PAIR: L+R)



CBRLCINE2.3

Zone **VARIO** Grey
 CAT.0-3
 Blue



CBRLCINE2.7

Zone **POLARIZED** Grey
 CAT.3
 Silver



CBRLCINE2.6

Zone Grey
 CAT.3
 Green



CBRLCINE2.4

Zone Grey
 CAT.3
 Blue



CBRLCINE2.5

Zone Grey
 CAT.3
 Red



CBRLCINE2.8

Zone Grey
 CAT.3



CBRLCINE2.2

Zone Yellow
 CAT.0



CBRLCINE2.1



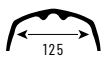


Zone Clear
 CAT.0

WILD 2.0 **NEW**



The Wild 2.0 delivers maximum comfort to medium faces thanks to its thin and lightweight frame so you only need to focus on performance!

Adjustable nose pads and rubberized temple tips ensure a perfect hold on the face in every situation.

BASE 8	SIZE M	 69,2 x 39,2	 15,3	 125	 123,7	 23,4g
------------------	------------------	--	---	--	--	--

LENS

- + Polycarbonate
- + Anti-scratch coating
- + Interchangeable lenses
- + Available with **photochromic lenses**
- + Available with **polarized lenses**
- + 2 or 3 lenses included

FRAME

- + TR90 + rubber
- + Ventilated frame
- + Adjustable nose pads
- + Anti-slip rubber nose pads
- + Anti-slip rubber temple tips
- + Optical clip compatible

COLOURWAYS (see next page)



WILD 2.0

NEW

SKUS



CBS098

MATT LAGOON ORANGE

Zone Grey **CAT.3** Red
+ Zone Yellow **CAT.0**
+ Zone Clear **CAT.0**



CBS102

MATT WHITE MINT

Zone **VARIO** Grey
CAT.0-3 Blue
+ Zone Clear **CAT.0**



CBS094

MATT BLACK GREY

Zone **VARIO** Grey
CAT.0-3 Blue
+ Zone Clear **CAT.0**



CBS095

MATT GRAPHITE BLUE

Zone **POLARIZED** Grey
CAT.3 Silver



CBS117

MATT BLACK PINK

Zone Grey **CAT.3** Pink
+ Zone Yellow **CAT.0**
+ Zone Clear **CAT.0**



CBS097

MATT BLACK BLUE

Zone Grey **CAT.3** Blue
+ Zone Yellow **CAT.0**
+ Zone Clear **CAT.0**



CBS096

MATT PEACH

Zone Grey **CAT.3**
+ Zone Yellow **CAT.0**
+ Zone Clear **CAT.0**



OPTICAL CLIP



CBCLIP1

REPLACEMENT LENSES (PAIR: L+R)



CBRLWILD2.3

Zone **VARIO** Grey
CAT.0-3
Blue



CBRLWILD2.4

Zone **POLARIZED** Grey
CAT.3
Silver



CBRLWILD2.5

Zone Grey
CAT.3
Blue



CBRLWILD2.7

Zone Grey
CAT.3
Red



CBRLWILD2.6

Zone Grey
CAT.3
Pink



CBRLWILD2.8

Zone Grey
CAT.3



CBRLWILD2.2

Zone Yellow
CAT.0








CBRLWILD2.1

Zone Clear
CAT.0

STRICKLAND



**8-base style for good coverage and protection against the elements
and available with category 3 polarized lenses,
Strickland covers all your mountain excursion needs.**

BASE 8	SIZE L	 58,5 x 41,7	 17,6	 128,5	 122,1	 32g
------------------	------------------	--	---	--	--	--

LENS

- + Polycarbonate
- + Anti-scratch coating
- + Available with **polarized lenses**

FRAME

- + TR90 + rubber
- + Double injected frame
- + Anti-slip rubber nose pads
- + Anti-slip rubber temple tips
- + Compatible with Céb  universal strap

COLOURWAYS (see next page)



STRICKLAND

SKUS



CBS048

SOFT TOUCH BLUE GREY

Zone **POLARIZED** Grey
CAT.3 Silver



CBS046

MATT BLACK LIME

Zone Grey CAT.3 Green



CBS047

SOFT TOUCH GREY BLUE

Zone Grey CAT.3 Blue



CBS064

SOFT TOUCH BLACK RED

Zone Grey CAT.3 Red



CBS045

MATT PETROL

Zone Grey CAT.3



CÉBÉ UNIVERSAL STRAP








STRAPMOUNTAIN

NORTHSHORE



Wrap-around design for medium faces,
Northshore features an anti-fog treatment and good frame ventilation
for crystal-clear vision.

BASE 8	SIZE M	 50,8 x 38,7	 16,5	 128	 121,7	 29,2g
------------------	------------------	--	---	--	--	--

LENS

→ Available with *SENSOR*

- + Polycarbonate
- + Anti-fog coating
- + Anti-scratch coating
- + Available with **photochromic lenses**

FRAME

- + TR90 + rubber
- + Ventilated frame
- + Anti-slip rubber nose pads
- + Anti-slip rubber temple tips

COLOURWAYS (see next page)



NORTHSHORE

SKUS



CBS010

MATT BLACK SHINY RED

SENSOR VARIO Rose

CAT.1-3 Silver AF



CBS008

MATT GREY SHINY ORANGE

Zone Grey **CAT.3** Red AF



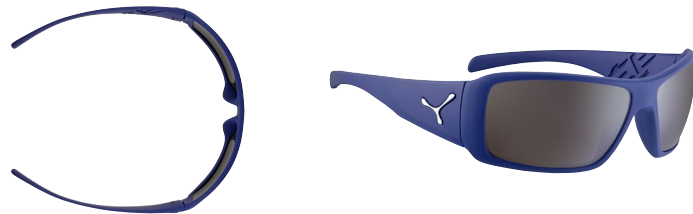
CBS007

MATT BLACK LIME



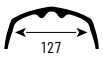


Zone Grey **CAT.3** Green AF



UTOPIY



Available with category 4 Zone lenses, the Utopiy fits large faces perfectly and offers good lateral protection thanks to its large temples.

BASE 8	SIZE L	 64,5 x 39,2	 14,3	 127	 133	 33g
------------------	------------------	--	---	--	--	--

LENS

- + Polycarbonate
- + Anti-scratch coating

FRAME

- + TR90
- + Compatible with Céb  universal strap

COLOURWAYS (see next page)



UTOPIY

SKUS



CBS112

NEW

SOFT TOUCH NAVY

Zone Brown **CAT.4** Silver



CBS075

MATT BLACK GUN

Zone Brown **CAT.4** Silver



CBUTOPY4

MATT BLACK GREEN

Zone Grey **CAT.3** Green



CBUTOPY3

MATT BLACK ORANGE



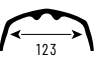


Zone Grey **CAT.3** Red



HAKA



Stylish lines and available with polarized lenses,
the Haka will be your best ally on all your rides.

BASE 8	SIZE M	 59,3 x 37	 16,1	 123	 127	 25g
------------------	------------------	--	---	--	--	--

LENS

- + Polycarbonate
- + Anti-scratch coating
- + Available with **polarized lenses**

FRAME

- + TR90

COLOURWAYS (see next page)



HAKA

SKUS



CBHAKA8

MATT TRANSLUCENT BLUE
Zone Grey CAT.3 Blue



CBHAKA3

MATT BLACK
Zone **POLARIZED** Grey CAT.3



CBHAKA6

**MATT TRANSLUCENT
GREY LIME**
Zone Grey CAT.3 Green



CBS105

NEW

MATT NAVY
Zone Grey CAT.3 Red



CBHAKA2

MATT BLACK RED
Zone Grey CAT.3








WHISPER



A fantastic style for outdoor lovers.

Full coverage and lightweight, the Whisper will stay on your face whatever your activity thanks to its rubbered nose pads.

BASE 8	SIZE M	 59,2 x 38,6	 18	 129,5	 126,6	 26g
------------------	------------------	--	---	--	--	--

LENS

- + Polycarbonate
- + Anti-reflective coating
- + Anti-scratch coating

FRAME

- + TR90 + rubber
- + Anti-slip rubber nose pads
- + Anti-slip rubber temple tips

COLOURWAYS (see next page)



WHISPER

SKUS



CBWHISP5

MATT BLACK ORANGE

Zone Grey **CAT.3** Red AR



CBWHISP2

MATT BLACK BLUE

Zone Grey **CAT.3** Blue AR



CBWHISP7

MATT BLACK WHITE

Zone Grey **CAT.3**



SPORT








STYLÉ

IRON

NEW



**An angular frame combining nylon TR90
and a metal brow bar for a more assertive look!**
Designed for large faces, this new style is ideal for urban activities
as well as active getaways.

BASE 6	SIZE L	 60 x 47,2	 20	 140	 137	 30g
------------------	------------------	--	---	--	--	--

LENS

- + Polycarbonate
- + Anti-scratch coating
- + Available with **polarized lenses**

FRAME

- + TR90

COLOURWAYS (see next page)



IRON

NEW

SKUS



CBS146

MATT TORTOISE

Zone Grey **CAT.3** Silver



CBS145

MATT BLACK

Zone **POLARIZED** Grey **CAT.3**



CBS142

MATT GRAPHITE

Zone Grey **CAT.3** Green



CBS143

MATT COOPER BLACK

Zone Grey **CAT.3** Silver








PHŒNIX **NEW**



With Céb  lifestyle sunglasses, looking cool while being perfectly protected is standard. This new feminine model is no exception.

A nylon construction ensures its lightness and durability while the C b  Zone lenses guarantee 100% UVA/UVB protection.

BASE 6	SIZE M	 52,8 x 43,3	 20,5	 132	 143,5	 24g
------------------	------------------	--	---	--	--	--

LENS

- + Polycarbonate
- + Anti-scratch coating
- + Available with **polarized lenses**

FRAME

- + TR90

COLOURWAYS (see next page)



PHŒNIX **NEW**

SKUS



CBS138

MATT TRANSLUCENT NAVY

Zone Grey **CAT.3** Pink



CBS139

MATT SHINY BLACK

Zone **POLARIZED** Grey **CAT.3**



CBS161

MATT BLACK

Zone Brown **CAT.3** Gold



CBS141

SHINY CLEAR PEACH

Zone Grey **CAT.3** Silver



CBS140

SHINY WHITE COOPER






Zone Brown **CAT.3** Silver



BAXTER



With sporty lines and straight temples,
Baxter is the perfect option for all active lifestyle sunglass lovers:
anti-slip rubber nose pads and polarized lenses to keep style
and for visual comfort during any activity in reflective environments.

BASE 6	SIZE L	 59,2 x 43,1	 18	 134	 136,2	 26g
------------------	------------------	--	---	--	--	--

LENS

- + Polycarbonate
- + Anti-scratch coating
- + Available with **polarized lenses**

FRAME

- + TR90
- + Anti-slip rubber nose pads

COLOURWAYS (see next page)



BAXTER

SKUS



CBS116

NEW

MATT TRANSLUCENT GREY

Zone Grey **CAT.3** Blue



CBS037

SOFT TOUCH BLACK

Zone **POLARIZED** Grey
CAT.3 Silver



CBS034

SOFT TOUCH BLACK

Zone Grey **CAT.3** Green



CBS038

MATT BLACK LIME






Zone Grey **CAT.3** Silver



QUEENSTOWN



Mixing very modern and sport inspired temples with a feminine round shaped frame, the Queenstown is perfect for active women.
Offering 100% protection against UVA/UVB, you just have to choose the lens colour that fits your style!

BASE 6	SIZE L	 57 x 44,2	 18	 132,7	 137	 26g
------------------	------------------	--	---	--	--	--

LENS

- + Polycarbonate
- + Anti-scratch coating
- + Available with **polarized lenses**

FRAME

- + TR90
- + Anti-slip rubber nose pads

COLOURWAYS (see next page)



QUEENSTOWN

SKUS



CBS033

SHINY BLACK TORTOISE
Zone Brown **CAT.3**



CBS029

MATT TRANSLUCENT GREY
Zone **POLARIZED** Grey
CAT.3 Silver



CBS031

MATT BLACK SHINY BLACK
Zone Grey **CAT.3** Pink



CBS030

MATT BLACK GOLD
Zone Brown **CAT.3** Gold



EMPIRE



Taut lines for a great design, flash mirror lenses and available with polarized lenses, the Empire is everything you need for a sporty life on a daily basis.

BASE 6	SIZE L	 61 x 42,3	 18,4	 139,4	 136	 28g
------------------	------------------	---------------	----------	-----------	---------	---------

LENS

- + Polycarbonate
- + Anti-scratch coating
- + Available with **polarized lenses**

FRAME

- + TR90

COLOURWAYS (see next page)



EMPIRE

SKUS



CBEMP1

MATT BLACK METALLIC RED
Zone Grey CAT.3 Red



CBS106

NEW

MATT METAL NAVY
Zone Grey CAT.3



CBEMP4

MATT BLACK METALLIC BLUE
Zone Grey CAT.3 Blue



CBS162

NEW

SHINY BLACK GUNMETAL
Zone **POLARIZED** Grey CAT.3








HIPE



Hipe has a trendy rectangular eye-shape and fits large faces perfectly.

With its fresh colours and flash mirrors, this design is your ally for summer!

BASE 6	SIZE L	 56 x 43,8	 18,2	 132	 148	 21,9g
------------------	------------------	--	---	--	--	--

LENS

- + Polycarbonate
- + Anti-reflective coating
- + Anti-scratch coating

FRAME

- + TR90

COLOURWAYS (see next page)



HIPE

SKUS



CBHIPE2

SHINY TRANSLUCENT GREY
Zone Grey **CAT.3** Green AR



CBHIPE4

MATT TRANSLUCENT CLEAR
Zone Grey **CAT.3** Blue AR



CBHIPE5

MATT BLACK RED
Zone Grey **CAT.3** Red AR



CBHIPE3

**SHINY TRANSLUCENT
CLEAR BLACK**
Zone Grey **CAT.3** AR



CBHIPE1






MATT BLACK TRANSLUCENT
Zone Grey **CAT.3** AR



HACKER



A modern eye shape and a unisex design
that perfectly fits medium faces.

BASE 6	SIZE M	 45 x 41	 19	 131,7	 138,6	 25g
------------------	------------------	--	---	--	--	--

LENS

- + Polycarbonate
- + Anti-scratch coating
- + Available with **polarized lenses**

FRAME

- + TR90

COLOURWAYS (see next page)



HACKER

SKUS



CBS156

NEW

**MATT TRANSLUCENT
LAGOON**

Zone Grey **CAT.3** Silver



CBHACK7

MATT BLACK CRYSTAL GREY

Zone **POLARIZED** Grey **CAT.3**



CBHACK3

SHINY BLACK GREEN

Zone Grey **CAT.3** Green



CBHACK1

MATT GREY ORANGE

Zone Grey **CAT.3** Red



CBHACK9

MATT BLACK GOLD






Zone Brown **CAT.3** Gold



SUNRISE



A rounded eye shape dedicated to women who are looking for style and protection.

BASE 6	SIZE S	 53,7 x 44,4	 18	 131	 138,5	 21g
------------------	------------------	--	---	--	--	--

LENS

- + Polycarbonate
- + Anti-reflective coating
- + Anti-scratch coating
- + Available with **polarized lenses**

FRAME

- + TR90

COLOURWAYS (see next page)



SUNRISE

SKUS



CBS118

NEW

SHINY WHITE BLUSH

Zone Brown **CAT.3** Gold



CBSUNRI4

MATT BLACK SILVER

Zone **POLARIZED** Grey **CAT.3**



CBSUNRI1

SHINY TRANSLUCENT PINK

Zone Grey **CAT.3** Pink AR



CBSUNRI5

SHINY TORTOISE GOLD

Zone Brown **CAT.3**



CBSUNRI2

MATT BLACK PINK

Zone Grey **CAT.3** Pink








JUNIOR



CHOUKA



The most adapted protection for little kiddies, a full coverage eye shape, Blue Light blocking lenses and a soft, adjustable headband.

BASE 6	MONTHS 0-18	 41,8 x 32,6	 16,5	 95	 N/A	 21g
------------------	-----------------------	--	---	---	--	--

LENS

→ **BLUE light lens technology**

- + Polycarbonate
- + Anti-scratch coating

FRAME

- + TR90 + rubber
- + Double injected frame
- + Xtra-flex frame
- + Delivered with a hard case

COLOURWAYS (see next page)



CHOUKA

SKUS



CBCHOU11

MATT LILAC

Zone **BLUE LIGHT** Grey CAT.3



CBCHOU8

MATT BLUE GREY

Zone **BLUE LIGHT** Grey CAT.3



CBCHOU9

MATT RASPBERRY WHITE

Zone **BLUE LIGHT** Grey CAT.3



CBCHOU12

MATT MARINE BLUE WHITE

Zone **BLUE LIGHT** Grey CAT.3








KATCHOU **NEW**



A new headband sunglass to perfectly fit babies with larger faces.

It ensures a good hold for maximum comfort and stability.

In addition, there is no compromise on eye protection thanks to Cébé Zone Blue Light lenses.

BASE 6	MONTHS 0-18	 44,8 x 34,8	 17,4	 104,2	 N/A	 23g
------------------	-----------------------	--	---	--	--	--

LENS

→ **BLUE light lens technology**

- + Polycarbonate
- + Anti-scratch coating

FRAME

- + TR90 + rubber
- + Double injected frame
- + Xtra-flex frame
- + Delivered with a hard case

COLOURWAYS (see next page)



KATCHOU

NEW

SKUS



CBS151

MATT NAVY BLUE

Zone **BLUE LIGHT** Grey **CAT.3**

●



CBS152

MATT BLUSH GREY

Zone **BLUE LIGHT** Grey **CAT.3**

●



CBS150

MATT BLUE LIME

Zone **BLUE LIGHT** Grey **CAT.3**

●



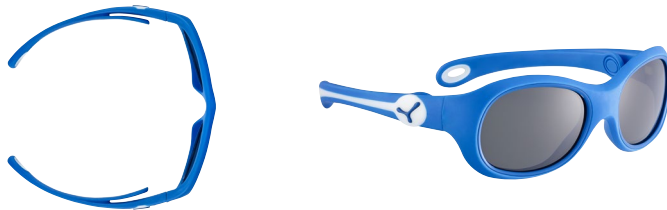
CBS124

MATT PINK LAVENDER






Zone **BLUE LIGHT** Grey **CAT.3**

●

S'MILE



The best lens protection for youngsters
combined with S'Tech™ technology for a perfect hold on the face:
no compromise for this style for babies.

BASE 6	MONTHS 0-18	 37,9 x 29,7	 15	 93,2	 93,6	 20g
------------------	-----------------------	--	---	---	---	--

LENS

→ **BLUE light lens technology**

- + Polycarbonate
- + Anti-scratch coating

FRAME

→ **Cébé exclusive S'TECH™**

- + TR90 + rubber
- + Double injected frame
- + Xtra-flex frame
- + Delivered with a strap
- + Delivered with a hard case

COLOURWAYS (see next page)



S'MILE

SKUS



CBSMILE5

MATT BLUE WHITE

Zone **BLUE LIGHT** Grey **CAT.3**



CBSMILE2

MATT PINK WHITE

Zone **BLUE LIGHT** Grey **CAT.3**



CBSMILE1

MATT BLUE GREY

Zone **BLUE LIGHT** Grey **CAT.3**



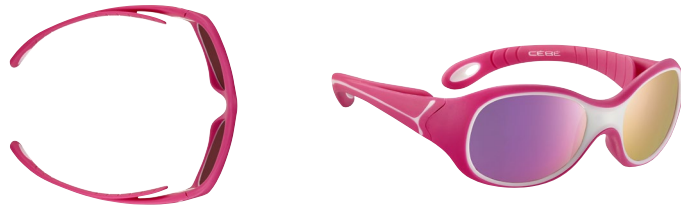
CBSMILE4

MATT LILAC



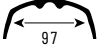


Zone **BLUE LIGHT** Grey **CAT.3**



S'KIMO



Comfort and protection from Cébé and great stability
due to our exclusive S'Tech™ technology.

BASE 6	YEARS 1-3	 41,8 x 32,6	 16,5	 97	 99,3	 21g
------------------	---------------------	--	---	---	---	--

LENS

→ **BLUE light lens technology**

- + Polycarbonate
- + Anti-scratch coating

FRAME

→ **Cébé exclusive S'TECH™**

- + TR90 + rubber
- + Double injected frame
- + Xtra-flex frame
- + Delivered with a strap
- + Delivered with a hard case

COLOURWAYS (see next page)



S'KIMO

SKUS



CBS115 **NEW**

MATT FUCHSIA WHITE

Zone **BLUE LIGHT** Grey
CAT.3 Pink



CBS114 **NEW**

MATT RED BLUE

Zone **BLUE LIGHT** Grey
CAT.3 Blue



CBS147 **NEW**

MATT NAVY LIME

Zone **BLUE LIGHT** Grey CAT.3



CBSKIM010

MATT RASPBERRY WHITE

Zone **BLUE LIGHT** Grey CAT.3



CBSKIM011

MATT BLUE GREEN

Zone **BLUE LIGHT** Grey CAT.3



CBSKIM016

**MATT MARINE BLUE
LIGHT BLUE**

Zone **BLUE LIGHT** Grey CAT.3



CBSKIM014

MATT VIOLET PARME

Zone **BLUE LIGHT** Grey CAT.3



CBSKIM021

MATT BLUE

Zone **BLUE LIGHT** Grey CAT.3



CBSKIM022

MATT PINK LAVENDER



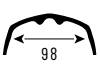


Zone **BLUE LIGHT** Grey CAT.3



BALOO



Baloo style has a more rectangular eye shape for maximum coverage and is designed to fit children's noses perfectly.

BASE 6	YEARS 1-3	 46 x 35	 11	 98	 108	 18g
------------------	---------------------	--	---	---	--	--

LENS

→ **BLUE light lens technology**

- + Polycarbonate
- + Anti-scratch coating

FRAME

- + TR90 + rubber
- + Double injected frame
- + Xtra-flex frame
- + Delivered with a strap
- + Delivered with a hard case

COLOURWAYS (see next page)



BALOO

SKUS



CBBAL0015

MATT BLUE

Zone **BLUE LIGHT** Grey **CAT.3**



CBBAL009

MATT PINK PARME

Zone **BLUE LIGHT** Grey **CAT.3**



CBBAL005

MATT DARK BLUE GREEN

Zone **BLUE LIGHT** Grey **CAT.3**



CBBAL006

MATT PINK PURPLE






Zone **BLUE LIGHT** Grey **CAT.3**



FLIPPER



Dedicated to 3 to 5-year-old children, the Flipper offers protection against Blue Light and an explosion of colours thanks to its bi-material construction.

BASE 6	YEARS 3-5	 50 x 34	 15	 99	 109	 19g
------------------	---------------------	--	---	---	--	--

LENS

→ **BLUE light lens technology**

- + Polycarbonate
- + Anti-scratch coating

FRAME

- + TR90 + rubber
- + Double injected frame
- + Xtra-flex frame
- + Delivered with a strap
- + Delivered with a hard case

COLOURWAYS (see next page)



FLIPPER

SKUS



CBS123 **NEW**

MATT WHITE FUCHSIA

Zone **BLUE LIGHT** Grey
CAT.3 Pink



CBS122 **NEW**

MATT BLUE LIME

Zone **BLUE LIGHT** Grey
CAT.3 Blue



CBS071

MATT MINT PINK

Zone **BLUE LIGHT** Grey CAT.3



CBS070

MATT RED NAVY BLUE

Zone **BLUE LIGHT** Grey CAT.3



CBFLIP14

MATT DARK BLUE BLUE

Zone **BLUE LIGHT** Grey CAT.3



CBFLIP16

MATT VIOLET PARME

Zone **BLUE LIGHT** Grey CAT.3



CBFLIP18

MATT RASPBERRY WHITE

Zone **BLUE LIGHT** Grey CAT.3



CBFLIP20

MATT MARINE BLUE GREEN

Zone **BLUE LIGHT** Grey CAT.3



CBFLIP24

MATT MARINE BLUE RED

Zone **BLUE LIGHT** Grey CAT.3



CBFLIP27

MATT DARK PINK VIOLET






Zone **BLUE LIGHT** Grey CAT.3



S'CALIBUR



A design whose technical characteristics will appeal to children and their parents! Equipped with Cébé S'Tech™ technology for optimal stability and xtra-flex temples for perfect ergonomics.

BASE 6	YEARS 3-5	 44,8 x 34,8	 17,4	 104,2	 104	 23g
------------------	---------------------	--	---	--	--	--

LENS

→ **BLUE light lens technology**

- + Polycarbonate
- + Anti-scratch coating

FRAME

→ **Cébé exclusive S'TECH™**

- + TR90 + rubber
- + Double injected frame
- + Xtra-flex frame
- + Delivered with a strap
- + Delivered with a hard case

COLOURWAYS (see next page)



S' CALIBUR

SKUS



CBS158 **NEW**

MATT RED BLUE

Zone **BLUE LIGHT** Grey
CAT.3 Blue



CBS069

MATT BLUE GREEN

Zone **BLUE LIGHT** Grey CAT.3



CBS153 **NEW**

MATT NAVY BLUE

Zone **BLUE LIGHT** Grey
CAT.3 Blue



CBS157 **NEW**

MATT TURQUOISE FUCHSIA

Zone **BLUE LIGHT** Grey
CAT.3 Pink



CBSCALI5

MATT CHOCOLATE BLUE

Zone **BLUE LIGHT** Grey CAT.3



CBS066

MATT PINK MINT

Zone **BLUE LIGHT** Grey CAT.3



CBS148 **NEW**

MATT PINK POWDER WHITE

Zone **BLUE LIGHT** Grey
CAT.3 Pink



CBSCALI2

MATT BLUE WHITE

Zone **BLUE LIGHT** Grey CAT.3



CBSCALI4

MATT PINK PURPLE

Zone **BLUE LIGHT** Grey CAT.3



CBSCALI8

MATT LAVENDER PINK






Zone **BLUE LIGHT** Grey CAT.3



S'TRIKE



The S'Trike has ultra-flexible frames and integrates Céb  S'Tech™ technology for a perfect hold on every child's face.
Also equipped with Céb  Blue Light lenses, it ensures optimal eye protection.

BASE 6	YEARS 3-5	 46,6 x 34,5	 15,5	 103	 116	 25g
------------------	---------------------	--	---	--	--	--

LENS

→ **BLUE light lens technology**

- + Polycarbonate
- + Anti-scratch coating

FRAME

→ **Céb  exclusive S'TECH™**

- + TR90 + rubber
- + Double injected frame
- + Xtra-flex frame
- + Delivered with a strap
- + Delivered with a hard case

COLOURWAYS (see next page)



S'TRIKE

SKUS



CBS120

NEW

MATT NAVY ORANGE

Zone **BLUE LIGHT** Grey **CAT.3**



CBSTRIKE1

MATT BLUE

Zone **BLUE LIGHT** Grey
CAT.3 Blue



CBSTRIKE2

MATT GREY BURGUNDY

Zone **BLUE LIGHT** Grey
CAT.3 Red



CBSTRIKE3

MATT BLUE GREEN

Zone **BLUE LIGHT** Grey **CAT.3**



CBS067

MATT RED NAVY BLUE






Zone **BLUE LIGHT** Grey **CAT.3**



S'PIES



Featuring Céb  S'Tech™ technology and bi-material construction, the S'Pies model, with its girly colours, is just as comfortable as it is fashionable.

BASE 6	YEARS 3-5	 46,3 x 35,3	 15,9	 103	 116	 25g
------------------	---------------------	--	---	--	--	--

LENS

→ **BLUE light lens technology**

+ Polycarbonate

+ Anti-scratch coating

FRAME

→ **Céb  exclusive S'TECH™**

+ TR90 + rubber

+ Double injected frame

+ Xtra-flex frame

+ Delivered with a strap

+ Delivered with a hard case

COLOURWAYS (see next page)



S'PIES

SKUS



CBS121

NEW

MATT PINK POWDER WHITE

Zone **BLUE LIGHT** Grey

CAT.3 Pink



CBSPIES5

MATT MINT TURQUOISE

Zone **BLUE LIGHT** Grey **CAT.3**



CBSPIES3

**MATT DEEP PINK LIGHT
DEEP PINK**

Zone **BLUE LIGHT** Grey

CAT.3 Pink



CBSPIES2

MATT LAVENDER ROSE






Zone **BLUE LIGHT** Grey **CAT.3**



ZAC



A modern design, featuring Blue Light technology so little boys can mirror their parents, without compromising on protection.

BASE 6	YEARS 5-7	 50,7 x 39,1	 16,4	 119	 124	 20g
------------------	---------------------	--	---	--	--	--

LENS

→ **BLUE light lens technology**

- + Polycarbonate
- + Anti-scratch coating

FRAME

- + TR90
- + Delivered with a strap
- + Delivered with a hard case

COLOURWAYS (see next page)



ZAC

SKUS



CBS126 **NEW**

SOFT TOUCH GREY

Zone **BLUE LIGHT** Grey

CAT.3 Blue



CBZAC1

MATT BLACK LIME

Zone **BLUE LIGHT** Grey

CAT.3 Green



CBZAC3

MATT BLACK RED

Zone **BLUE LIGHT** Grey

CAT.3 Red



CBZAC4

MATT BLUE ORANGE






Zone **BLUE LIGHT** Grey **CAT.3**



ELLA



With a design inspired by trendy adult styles,
this sunglass will delight girls aged from 5 to 7.

BASE 6	YEARS 5-7	 49 x 39,4	 15,3	 116	 122,7	 17g
------------------	---------------------	--	---	--	--	--

LENS

→ **BLUE light lens technology**

- + Polycarbonate
- + Anti-scratch coating

FRAME

- + TR90
- + Delivered with a strap
- + Delivered with a hard case

COLOURWAYS (see next page)



ELLA

SKUS



CBELLA4

SHINY VIOLET

Zone **BLUE LIGHT** Grey **CAT.3**



CBS125

NEW

**SHINY TRANSLUCENT
BLUSH WHITE**

Zone **BLUE LIGHT** Grey
CAT.3 Pink



CBELLA5

MATT PINK BLACK

Zone **BLUE LIGHT** Grey **CAT.3**



CBELLA1

MATT BLACK PINK



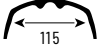


Zone **BLUE LIGHT** Grey
CAT.3 Pink



SCRAT



An 8-base design, for good coverage and maximum protection during all children's activities.

BASE 8	YEARS 7-10	 56,2 x 34,1	 11,9	 115	 121	 22g
------------------	----------------------	--	---	--	--	--

LENS

→ **BLUE light lens technology**

- + Polycarbonate
- + Anti-scratch coating

FRAME

- + TR90 + rubber
- + Delivered with a strap
- + Delivered with a hard case

COLOURWAYS (see next page)



SCRAT

SKUS



CBS129

NEW

MATT NAVY ORANGE

Zone **BLUE LIGHT** Grey **CAT.3**



CBSCRAT7

MATT GREY YELLOW

Zone **BLUE LIGHT** Grey

CAT.3 Green



CBS073

MATT BLUE GREEN

Zone **BLUE LIGHT** Grey

CAT.3 Blue



CBSCRAT8

MATT BLACK RED

Zone **BLUE LIGHT** Grey






CAT.3 Red



AVATAR



Dedicated to children aged from 7 to 10,
this design will perfectly protect them from harmful Blue Light
whilst giving them an unrivalled look.

BASE 6	YEARS 7-10	 51,5 x 37,2	 16,7	 115	 126	 20g
------------------	----------------------	--	---	--	--	--

LENS

→ **BLUE light lens technology**

- + Polycarbonate
- + Anti-scratch coating

FRAME

- + TR90
- + Delivered with a hard case

COLOURWAYS (see next page)



AVATAR

SKUS



CBS074

SOFT TOUCH GREY BLUE

Zone **BLUE LIGHT** Grey
CAT.3 Blue



CBS130

NEW

MATT NAVY RED

Zone **BLUE LIGHT** Grey
CAT.3 Red



CBAVAT6

MATT BLACK LIME

Zone **BLUE LIGHT** Grey
CAT.3 Green



CBAVAT3

MATT BLUE GREEN

Zone **BLUE LIGHT** Grey CAT.3



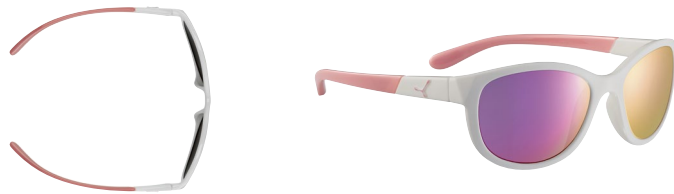
CBAVAT2

MATT ANTHRACITE RED






Zone **BLUE LIGHT** Grey CAT.3



KATNISS



Head into the summer with style! With its flash mirror lenses, the Katniss model is perfect for girls aged from 7 to 10.

BASE 6	YEARS 7-10	 51 x 38,5	 16,6	 116	 126	 19g
------------------	----------------------	--	---	--	--	--

LENS

→ **BLUE light lens technology**

- + Polycarbonate
- + Anti-scratch coating

FRAME

- + TR90
- + Delivered with a hard case

COLOURWAYS (see next page)



KATNISS

SKUS



CBS131

NEW

SHINY WHITE PINK

Zone **BLUE LIGHT** Grey

CAT.3 Pink



CBKAT2

SHINY VIOLET BLACK

Zone **BLUE LIGHT** Grey **CAT.3**



CBKAT7

MATT BLACK PINK

Zone **BLUE LIGHT** Grey

CAT.3 Pink



CBKAT1

MATT PINK BLACK






Zone **BLUE LIGHT** Grey **CAT.3**



COOPER



A top style in the 10 to 12 age-range,
meaning kids can be just as stylish as their parents.

BASE 6	YEARS 10-12	 52,1 x 40,1	 24,2	 128	 120,2	 21g
------------------	-----------------------	--	---	--	--	--

LENS

→ **BLUE light lens technology**

- + Polycarbonate
- + Anti-scratch coating

FRAME

- + TR90
- + Delivered with a hard case

COLOURWAYS (see next page)



COOPER

SKUS



CBS082 **NEW**

SOFT TOUCH NAVY

Zone **BLUE LIGHT** Grey **CAT.3**



CBS051

SOFT TOUCH BLACK RED

Zone **BLUE LIGHT** Grey

CAT.3 Red



CBS053

**MATT BLACK
GRADIENT BLUE**

Zone **BLUE LIGHT** Grey

CAT.3 Blue



CBS050

MATT BLACK PINK

Zone **BLUE LIGHT** Grey

CAT.3 Pink








AYDEN **NEW**



At 10 to 12 years old, children are not kids anymore.

That's why this year C  b   has launched a new style combining a cool shape, soft materials and of course pop colours. And because we don't compromise on protection, the Ayden also features our Blue Light lenses to block harmful blue light.

BASE 6	YEARS 10-12	 54,6 x 41,2	 15,7	 123,7	 124,4	 22g
------------------	-----------------------	--	---	--	--	--

LENS

→ **BLUE light lens technology**

- + Polycarbonate
- + Anti-scratch coating

FRAME

- + TR90
- + Delivered with a hard case

COLOURWAYS (see next page)



AYDEN

NEW

SKUS



CBS135

MATT BLACK

Zone **BLUE LIGHT** Brown

CAT.3 Gold



CBS133

MATT TRANSLUCENT NAVY

Zone **BLUE LIGHT** Grey

CAT.3 Pink



CBS134

**SHINY WHITE
TRANSLUCENT PINK**

Zone **BLUE LIGHT** Grey CAT.3



CBS132

SHINY MATT BLACK

Zone **BLUE LIGHT** Grey

CAT.3 Pink



SKUS INDEX



CORE

S'TRACK L



NEW

CBS154



NEW

CBS078



NEW

CBS107



NEW

CBS104



CBSTL15



CBS058



CBSTL16



CBSTL13

PAGE 28

S'TRACK M



NEW

CBS081



CBS080



CBS113



CBS155



CBSTM17



CBS079



CBSTM15



CBSTM14

PAGE 30

S'PRING 2.0



NEW

CBS108



CBS043



CBS044

PAGE 32



CBS005



CBS006



CBS159



CBS001

PAGE 34

UPSHIFT



CBS005



CBS006



CBS159



CBS001

PAGE 34

SUMMIT



NEW

CBS109



CBSUM4



CBSUM2



CBSUM1



CBSUM3

PAGE 36

EVEREST



NEW

CBS084



CBS100



CBS019



CBS020

PAGE 38

PROGUIDE



CBPRO66



CBS028



CBPROG1



CBS039



CBPROG8

PAGE 40

JORASSES L



CBJ08



CBJ110



CBS023



CBJ01

PAGE 42

JORASSES M



CBJ04



CBS025



CBS024



CBJ01



CBJ03

PAGE 44



JUNIOR

CHOUKA



CBCHOU11



CBCHOU8



CBCHOU9



CBCHOU12 PAGE 81

KATCHOU



CBS151 NEW



CBS152 NEW



CBS150 NEW



CBS124 NEW PAGE 83

S'MILE



CBSMILE5



CBSMILE2



CBSMILE1



CBSMILE4 PAGE 85

S'KIMO



CBS115 NEW



CBS114 NEW



CBS147 NEW



CBSKIM010



CBSKIM011



CBSKIM016



CBSKIM014



CBSKIM021



CBSKIM022 PAGE 87

BALOO



CBBAL0015



CBBAL009



CBBAL005



CBBAL006 PAGE 89

FLIPPER



CBS123 NEW



CBS122 NEW



CBS071



CBS070



CBFLIP14



CBFLIP16



CBFLIP18



CBFLIP20



CBFLIP24



CBFLIP27 PAGE 91

S'CALIBUR



CBS158 NEW



CBS069



CBS153 NEW



CBS157 NEW



CBSCALI5



CBS066



CBS148 NEW



CBSCALI2



CBSCALI4



CBSCALI8 PAGE 93

S'TRIKE



CBS120 NEW



CBSTRIKE1



CBSTRIKE2



CBSTRIKE3



CBS067 PAGE 95

S'PIES



CBS121 NEW



CBSPIES5



CBSPIES3



CBSPIES2 PAGE 97

ZAC



CBS126 NEW



CBZAC1



CBZAC3



CBZAC4 PAGE 99

ELLA



CBELLA4



CBS125 NEW



CBELLA5



CBELLA1 PAGE 101

SCRAT



CBS129 NEW



CBSCRAT7



CBS073



CBSCRAT8 PAGE 103

AVATAR



CBS074



CBS130 NEW



CBAVAT6



CBAVAT3



CBAVAT2 PAGE 105

KATNISS



CBS131 NEW



CBKAT2



CBKAT7



CBKAT1 PAGE 107

COOPER



CBS082 NEW



CBS051



CBS053



CBS050 PAGE 109

AYDEN



CBS135 NEW



CBS133 NEW



CBS134 NEW



CBS132 NEW PAGE 111

SKUS BY LENS TECHNO

MINÉRAL

SUMMIT



CBSUM2
MATT BLACK BLUE
PEAK GREY CAT.4 Blue AR



CBSUM1
MATT BLACK SILVER
PEAK GREY CAT.4 Silver AR

PAGE 36

EVEREST



CBS019
MATT BLACK GREY
PEAK GREY Cat.4 Blue AR



CBS020
MATT GREY BLUE
PEAK GREY CAT.4 Silver AR

PAGE 38

PROGUIDE



CBPRO61
MATT BLACK BLUE
PEAK GREY CAT.4 Blue AR



CBS039
MATT PETROL ORANGE
PEAK GREY CAT.4 Silver AR

PAGE 40

JORASSES L



CBS110
MATT WHITE BLUE
PEAK GREY CAT.4 Blue AR

NEW



CBS023
MATT PETROL LIME
PEAK GREY CAT.4 Silver AR

PAGE 42

JORASSES M



CBS025
MATT GREY LIME
PEAK GREY CAT.4 Silver AR

PAGE 44

CAT.4

SUMMIT



CBSUM2
MATT BLACK BLUE
PEAK GREY CAT.4 Blue AR



CBSUM1
MATT BLACK SILVER
PEAK GREY CAT.4 Silver AR



CBSUM3
MATT BLACK RED
ZONE BROWN CAT.4 Silver AR

PAGE 36

EVEREST



CBS084
MATT GUNMETAL YELLOW
ZONE BROWN CAT.4 Silver AF

NEW



CBS019
MATT BLACK GREY
PEAK GREY CAT.4 Blue AR



CBS020
MATT GREY BLUE
PEAK GREY CAT.4 Silver AR

PAGE 38

PROGUIDE



CBPRO61
MATT BLACK BLUE
PEAK GREY CAT.4 Blue AR



CBS039
MATT PETROL ORANGE
PEAK GREY CAT.4 Silver AR



CBPRO68
MATT BLACK RED
ZONE BROWN CAT.4 Silver AF

PAGE 40

JORASSES L



CBS110
MATT WHITE BLUE
PEAK GREY CAT.4 Blue AR

NEW



CBS023
MATT PETROL LIME
PEAK GREY CAT.4 Silver AR



CBJ011
MATT BLACK RED
ZONE BROWN CAT.4 Silver AF

PAGE 42

JORASSES M



CBS025
MATT GREY LIME
PEAK GREY CAT.4 Silver AR



CBS024
MATT PETROL ORANGE
ZONE BROWN CAT.4 Silver



CBJ011
MATT BLACK PINK
ZONE BROWN CAT.4 Silver AF

PAGE 44

UTOPIY



CBS112
SOFT TOUCH NAVY
ZONE BROWN CAT.4 Silver

NEW



CBS075
MATT BLACK GUN
ZONE BROWN CAT.4 Silver

PAGE 57

SENSOR

POLARISÉ

S'TRACK L



CBS078 NEW
 MATT NEON ORANGE BLACK
SENSOR **VARIO** Rose CAT.1-3 Silver AF



CBS107 NEW
 MATT BLACK SILVER
SENSOR **VARIO** Rose CAT.1-3 Silver AF PAGE 28

S'TRACK M



CBS081 NEW
 MATT PLUM TURQUOISE
SENSOR Rose CAT.3 Silver AF
 + **ZONE** Clear CAT.0 AF



CBS080 NEW
 MATT NAVY RED
SENSOR **VARIO** Rose CAT.1-3 Silver AF



CBS113 NEW
 MATT BLACK
SENSOR **VARIO** Rose CAT.1-3 Silver AF PAGE 30

S'TRACK L



CBSTL15
 MATT BLACK RED
ZONE **POLARIZED** Grey CAT.3 Silver AF
 + **ZONE** Clear Cat.0 AF PAGE 28

S'TRACK M



CBSTM17
 MATT BLACK BLUE
ZONE **POLARIZED** Grey CAT.3 Silver AF
 + **ZONE** **CLEAR** Cat.0 AF PAGE 30

SUMMIT



CBS109 NEW
 MATT NAVY RED WHITE
ZONE **POLARIZED** Grey CAT.3 Silver AF PAGE 36

JORASSES M



CBJOM3
 MATT BLACK TURQUOISE
ZONE **POLARIZED** Grey CAT.3 Silver AF PAGE 44

CINETIK 2.0



CBS092 NEW
 SHINY BLACK BLUE
ZONE **POLARIZED** Grey CAT.3 Silver PAGE 49

S'PRING 2.0



CBS043
 MATT BLACK PINK
SENSOR Rose Cat.3 Silver AF
 + **ZONE** Clear CAT.0 AF



CBS044
 MATT BLUE GRADIENT PINK
SENSOR **VARIO** Rose CAT.1-3 Silver AF PAGE 32

UPSHIFT



CBS006
 MATT GREY ORANGE
SENSOR **VARIO** Rose CAT.1-3 Silver AF



CBS159 NEW
 MATT BLACK LIME
SENSOR Rose CAT.3 Silver AF PAGE 34

WILD 2.0



CBS095 NEW
 MATT GRAPHITE BLUE
ZONE **POLARIZED** Grey CAT.3 Silver PAGE 51

STRICKLAND



CBS048
 SOFT TOUCH BLUE GREY
ZONE **POLARIZED** Grey CAT.3 Silver PAGE 53

HAKA



CBHAKA3
 MATT BLACK
ZONE **POLARIZED** Grey CAT.3 PAGE 59

IRON



CBS145 NEW
 MATT BLACK
ZONE **POLARIZED** Grey CAT.3 PAGE 64

PHOENIX



CBS139 NEW
 MATT SHINY BLACK
ZONE **POLARIZED** Grey CAT.3 PAGE 66

HILLDROP



CBS016
 MATT BLACK SHINY RED
SENSOR **VARIO** Rose CAT.1-3 Silver



CBS160 NEW
 MATT BLACK
SENSOR Rose CAT.3 Silver
 + **ZONE** Clear CAT.0 PAGE 47

NORTHSHORE



CBS010
 MATT BLACK SHINY RED
SENSOR **VARIO** Rose CAT.1-3 Silver AF PAGE 55

BAXTER



CBS037
 SOFT TOUCH BLACK
ZONE **POLARIZED** Grey CAT.3 Silver PAGE 68

QUEENSTOWN



CBS029
 MATT TRANSLUCENT GREY
ZONE **POLARIZED** Grey CAT.3 Silver PAGE 70

EMPIRE



CBS162 NEW
 SHINY BLACK GUNMETAL
ZONE **POLARIZED** Grey CAT.3 PAGE 72

HACKER



CBHACK7
 MATT BLACK CRYSTAL GREY
ZONE **POLARIZED** Grey CAT.3 PAGE 76

SUNRISE



CBSUNRI4
 MATT BLACK SILVER
ZONE **POLARIZED** Grey CAT.3 PAGE 78

S'TRACK L



CBS154 NEW
MATT RED BLUE
 ZONE **VARIO** Grey CAT.0-3 Blue AF



CBS078 NEW
MATT NEON ORANGE BLACK
SENSOR **VARIO** Rose CAT.1-3 Silver AF



CBS107 NEW
MATT BLACK SILVER
SENSOR **VARIO** Rose CAT.1-3 Silver AF



CBS104 NEW
MATT NAVY LIME
 ZONE **VARIO** Grey CAT.0-3 Blue AF PAGE 28

S'TRACK M



CBS080 NEW
MATT NAVY RED
SENSOR **VARIO** Rose CAT.1-3 Silver AF



CBS113 NEW
MATT BLACK
SENSOR **VARIO** Rose CAT.1-3 Silver AF



CBS155 NEW
MATT NEON ORANGE NAVY
 ZONE **VARIO** Grey CAT.0-3 Blue AF PAGE 30

S'PRING 2.0



CBS108 NEW
MATT BLACK BLUE
 ZONE **VARIO** Grey CAT.0-3 Blue AF



CBS044 PAGE 32
MATT BLUE GRADIENT PINK
SENSOR **VARIO** Rose CAT.1-3 Silver AF

UPSHIFT



CBS006
MATT GREY ORANGE
SENSOR **VARIO** Rose CAT.1-3 Silver AF PAGE 34

SUMMIT



CBSUM4 PAGE 36
MATT BLACK LIME
 ZONE **VARIO** Green CAT.2-4 Silver AF

EVEREST



CBS100 NEW
MATT BLACK
 ZONE **VARIO** Green CAT.2-4 Silver AF PAGE 38

PROGUIDE



CBPROG6
MATT WHITE BLACK
 ZONE **VARIO** Green CAT.2-4 Silver AF



CBS028 PAGE 40
MATT GREY GREEN
 ZONE **VARIO** Green CAT.2-4 Silver AF

JORASSES L



CBJOL8 PAGE 42
MATT GREY BLUE
 ZONE **VARIO** Green CAT.2-4 Silver AF

JORASSES M



CBJOM4 PAGE 44
MATT DARK BLUE BLUE
 ZONE **VARIO** Green CAT.2-4 Silver AF

HILLDROP



CBS016 PAGE 47
MATT BLACK SHINY RED
SENSOR **VARIO** Rose CAT.1-3 Silver

CINETIK 2.0



CBS101 NEW
MATT NEON ORANGE
 ZONE **VARIO** Grey CAT.0-3 Blue
 + ZONE Clear Cat.0



CBS087 NEW
MATT BLACK GREY
 ZONE **VARIO** Grey CAT.0-3 Blue
 + ZONE Clear CAT.0 PAGE 49

WILD 2.0



CBS102 NEW
MATT WHITE MINT
 ZONE **VARIO** Grey CAT.0-3 Blue
 + ZONE Clear CAT.0



CBS094 NEW
MATT BLACK GREY
 ZONE **VARIO** Grey CAT.0-3 Blue
 + ZONE Clear CAT.0 PAGE 51

NORTHSHORE



CBS010 PAGE 53
MATT BLACK SHINY RED
SENSOR **VARIO** Rose CAT.1-3 Silver AF

AMERICA (NORTH & SOUTH)

Bollé Brands
745 Atlantic Ave
Boston, MA 02111
Tel: 1-800-222-6553
na.support@bollebrands.com

ANDORRA

Bollé Brands Spain
C/Alava , 60 6ª 1ª
08005 Barcelona
Tel: +34 93 486 48 00
Fax: +34 93 309 29 11
clientes@bollebrands.com

AUSTRALIA & NEW ZEALAND

Bollé Australia Pty. Ltd.
ABN 77 005 741 300
32-40 Fairchild Street
Heatherston, 3202 Victoria
P.o. Box 579
Moorabbin, 3189 Victoria
Tel (AUS): 1300138098
Tel (NZ): 08002655369
anz@bollebrands.com

BELGIUM

Technop NV
Dendermondesteenweg 335
B-9070 DESTELBERGEN
Tel: +32 9 238 2362
Fax: +32 9238 2362
nv.technop@technop.be

BOSNIA & HERZEGOVINA

Rodeo Team d.o.o.
Koroska Cesta 53
4000 KRANJ
Tel: +386 420 15 400
Fax: +386 420 15 401
info@rodeoteam.si

BULGARIA

Sport stores
Talent Sport LTD
32 Roza St.
1444 SOFIA S.Bistriza
Tel: +359 29 927 181
Fax: +359 29 927 250
talant.sport@gmail.com

Optical stores

Optigroup Ltd.
1A, Plachkovica Str./1164 Sofia
Tel.: +359884201040 / 0800 14777
office@optigroup.bg

CROATIA

Rodeo Team D.O.O.
Koroska Cesta 53
4000 KRANJ
Tel: +386 420 15 400
Fax: +386 420 15 401
info@rodeoteam.si

CYPRUS

EYELAND
5 EZ Thermistocles Dervis Street
Po Box 22910
1066 NICOSIA
Tel: +357 22 66 46 44
Fax: +357 22 75 25 55
eyeland@piliides.com

CZECH REPUBLIC

Gaudo – Detail s.r.o.
Sinkulova 74/7
Praha 4, CZ – 147 00
Mobile: +420 603 456 572
Tel/Fax: +420 224 214 198
info@gaudo.cz

DUBAI (U.A.E)

Pasteur Medical Instruments (PMI)
Po-Box 232433
Building 1 Almulla Complex
16A Street Al Qusais Industrial 1,
Dubai 6372, United Arab Emirates
Tel: +971 4 2679738
Fax: +971 4 2679748
pmidubai@pmidubai.com

ESTONIA

Silmalaser
Katusepapi 6, 11412 Tallinn
Tel: 3726025380
liisa.rannamae@silmalaser.ee

FINLAND

Neonsun Oy
Puusepäkatu 5
13110 HÄMEENLINNA
Finland
Tel: +358 3 612 7222
neonsun@neonsun.fi

FRANCE & EUROPE

Bollé Brands
34 rue de la Soie
69100 Villeurbanne
Tel: +33 4 78 85 23 64
Fax: +33 4 78 85 28 56
contact@bollebrands.com

GEORGIA

MGT Optics LLC
No. 50, Samtredia St., TBILISI,
Tel: 995555178121

GERMANY / AUSTRIA

Bollé Brands
An Der Alten Spinnerei 1
83059 Kolbermoor b. Rosenheim
Tel: +49 8031 233480
Fax: +49 8031 2334818
infofgermany@bollebrands.com

GREECE

Kokkoris Optics
111 Gounari Street
16561 GLYFADA
Tel: +30 210 962 77 00
Fax: +30 210 960 65 50
info@fashioncode.gr

HOLLAND

Bobo's Eyewear
Hambakenwetering 20
5231 Dc S-HERTOGENBOSCH
Tel: +31 73 690 1777
Fax: +31 73 690 1778
info@bobos.nl

HUNGARY

T&T Sport KFT.
H-1037 Budapest,
Csillaghegyi út 36.
Tel: 00 36 30 948 1404
etre@ski.hu

ICELAND

Echo Ehf
Skutuvogur 10 D
104 REYKJAVIK
Tel: +354 515 9999
Fax: +354 515 9990

IRELAND

Bushnell Performance
Optics UK Ltd
Unit C83
Barwell Business Park
Leatherhead Road
Chessington, Surrey
KT9 2NY
Tel: +44 (0) 208 391 4700
Fax: +44 (0) 208 391 4733
uk@bollebrands.com

ISRAEL

Icon Retail Ltd
HAMELACHA 45
4250574 NATANIA
Israel
Tel: +972 3 616 17 18
Fax: +972 3 579 55 56
yifat@be-icon.com

ITALY

Bollé Brands Italy S.R.L.
Corso Roma 13bis/1
10024 Moncalieri (TO)
Tel: +39 011 661 85 83
Fax: +39 011 661 87 68
italia@bollebrands.com

KIRGHIZSTAN

Gergert Sport
Gorkogo Str. 119
720000 BISHKEK
Tel: +996 312 5416 11
gergert@mail.ru

LATVIA

Sport stores
CB PROFILS
7 Gaujas Str
LV – 1026 RIGA
Tel: +371 367 242
Martins.Lucans@burusports.lv

Optical stores

SIA OPTIC GURU
Mednieku iela 21/23
OGRE, 5001 – Latvia
Tel : 65 03 56 35
gita@optiguru.lv

LEBANON

Winter Sports
Zouk Mosbeh Main Road
Paradise Bldg 55-418
BEYROUTH
Tel: +961 9 223 127
Fax: +961 9 223 127
wintersport@idm.net.lb

LITHUANIA

UAB PROSPORT LT
Vandziogalos Str 94
LT – 47467 KAUNAS
Tel : +37067270159
Fax : +837 210 580
info@prosport.lt

MACEDONIA

Rodeo Team D.O.O.
Koroska Cesta 53
4000 KRANJ
Tel: +386 420 15 400
Fax: +386 420 15 401
info@rodeoteam.si

NORWAY

Sport Agile AS
Bispeveien 1520
3178 VALE
Tel : +47 330 633 60
halvor@sportagile.no

POLAND

MALAVI Sp. z o.o. Sp.K.
Al. Prymasa Tysiaclecia 46 lok 331
01-242 WARSZAWA
Tel / Fax: +22 836 02 31
radek@malavi.pl

ROMANIA

KIDS TOWN
57 Ovidiu balea street
300620 Timisoara
Tel: 0040.733932448 (Timisoara)
Tel: 0040.726333924 (Bucuresti)
fischer@sportsgames.ro

RUSSIA

LLC "SPORTCAST"
Graivoronovskaya 23 of. 27
109518 MOSCOW
Russian Federation
info@sportcast.ru
Tel: + 7 495 649 92 63

SERBIA & MONTENEGRO

Rodeo Team D.O.O.
Koroska Cesta 53
4000 KRANJ
Tel: +386 420 15 400
Fax: +386 420 15 401
info@rodeoteam.si

SLOVAKIA

Regina Import S.R.O.
Podluzany 1
935 27 PODLUZANY 1
Tel: +421 36 632 22 07
Fax: +421 36 632 21 82
info@reginainport.sk

SLOVENIA

Rodeo Team D.O.O.
Koroska Cesta 53
4000 KRANJ
Tel: +386 420 15 400
Fax: +386 420 15 401
info@rodeoteam.si

SPAIN

Bollé Brands Spain
C/ Alava , 60 6ª 1ª
08005 Barcelona
Tel: +34 93 486 48 00
Fax: +34 93 309 29 11
clientes@bollebrands.com

SWEDEN

Cébé Scandinavia AB/BAGHEERA
Grabbogatan 1
774 35 AVESTA – Sweden
Tel: +46 0226-805 75
Fax: +46 0226-510 75
info@cebe.se

SWITZERLAND

Kairos / Optisport SA
Route de Chalais 28
3965 CHIPPIS
Tel: +41 27 451 12 00
Fax: +41 27 451 12 01
info@k-optisports.ch

TURKEY

Ant Optik
Gayrettepe Mahallesi
Pazar Sokak
Bareli Is Merkezi, No: 4/3
Besiktas
GAYRETTEPE - ISTANBUL, 34400
Turkey
Tel: +902 125 260 906
Fax: +902 125 260 905
info@antoptik.com

UKRAINE

Nimbus Llc (Marathon)
Tverskaya Street 6, Office 308
Petchersky District
03150 KIEV
Tel: +380 44 495 12 79/8
nimbuss@yandex.ua

UNITED KINGDOM

Bollé Brands UK Ltd
Unit C83
Barwell Business Park
Leatherhead Road
Chessington, Surrey
KT9 2NY
Tel: +44 (0) 208 391 4700
Fax: +44 (0) 208 391 4733
uk@bollebrands.com

SOUTH AFRICA

BPO SA
Marlin House
Norby Office Park
372 Rivonia Boulevard
2128 JOHANNESBURG
Tel: +27 11 792 5408
Fax: +27 11 7925258
info@ultimo.co.za



Y CÉBÉ
PURE ADRENALINE


CÉBÉ EUROPE
BOLLÉ BRANDS

34, rue de la Soie
69100 VILLEURBANNE FRANCE

TEL : +33 4 78 85 23 64

FAX : +33 4 78 85 28 56

E-MAIL : contact@bollebrands.com

 [Twitter@cebe_eyewear](https://twitter.com/cebe_eyewear)

 [Instagram@cebe_eyewear](https://www.instagram.com/cebe_eyewear)

 [Facebook@CebeAddict](https://www.facebook.com/CebeAddict)